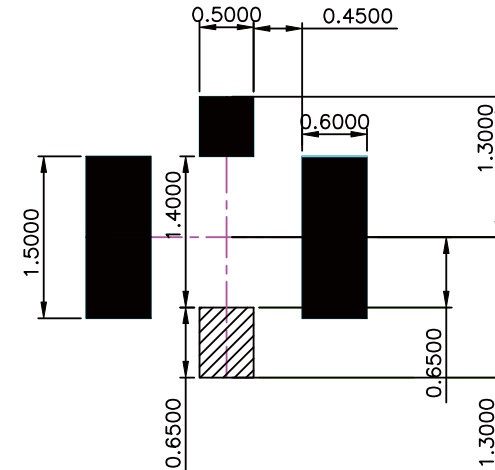
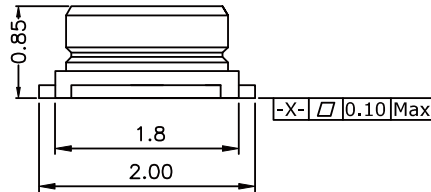
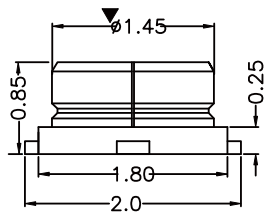
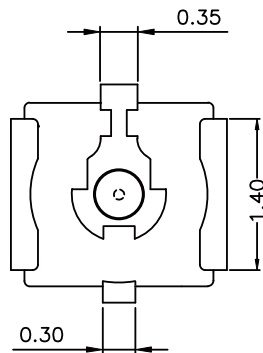


NOTE: UNLESS OTHERWISE SPECIFIED

1. DIMENSION SHALL BE INTERPRETED PER ANSI Y14.5M-1994.
2. DIMENSION MARKED WITH "▼" SHOULD SPECIFIED ON INSPECTION PLAN.
3. CONTACT RETENTION FORCE: 0.2 N MIN.
4. CONTACT MATERIAL: COPPER ALLOY.
5. INSULATOR: HIGH TEMPERATURE PLASTIC UL94 V-0.
6. CENTRE CONTACT FINISH: GOLD PLATED 1-2u" MIN., OUTER CONTACT FINISH: GOLD FLASH 1u" MIN. ALL OVER 50u" NICKEL MIN. UNDER PLATED.
7. LOW PROFILE: 1.5MM MAX. MATING HEIGHT.
8. APPLICATION FREQUENCY UP TO 6 G HZ.



■ CONDUCTOR PAD ■ GROUND PAD
RECOMMENDED PCB LAYOUT



3	GROUND SHELL, COPPER ALLOY, GOLD FLASH	1
2	CENTER PIN, COPPER ALLOY, GOLD 1~2u".	1
1	OVER MOLD HOUSING, LCP, IVORY, UL94V-0	1
ITEM	DESCRIPTION	Q'TY

RoHS Compliant

TOLERANCES ARE

MORETHANALL
PCB CONNECTORS
Cable ASSEMBLIES

DRAWING BY CY

X. ± 0.30

CHECKED BY GENIUS

.X ± 0.15

UNIT / mm

SCALE 1 : 1

.XX ± 0.10

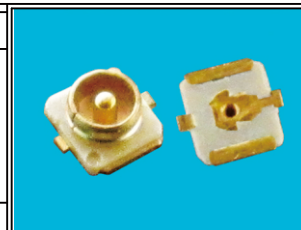
DATE

.XXX ±

ANG ± 1°

SIZE A4

PPOJECTION



ORDER INFORMATION

MHF14-JV08-50-LF

SERIES
LEADFREE
50 OHM
HIGH 0.85mm
180°SMT
JACK

煜倫股份有限公司

www.morethanall.com

DESCRIPTION: