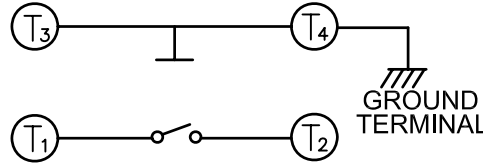
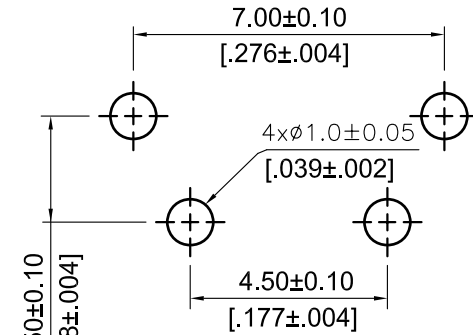


NOTE:

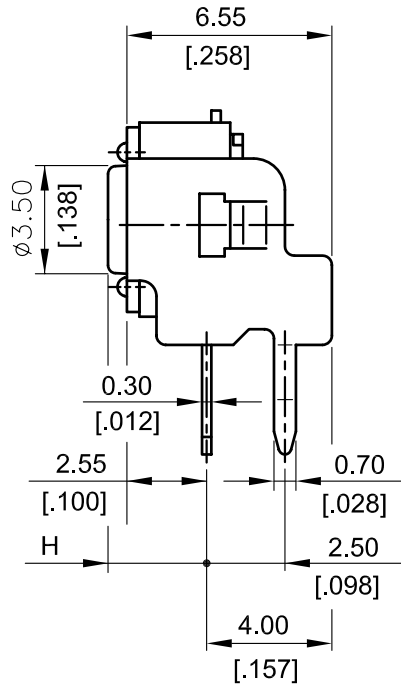
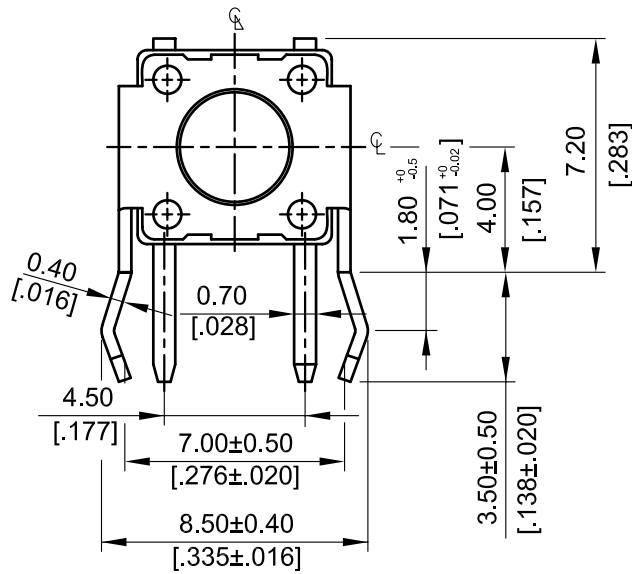
1. ALL DIMENSIONS ARE IN MILLIMETERS, BRACKETED DIMENSIONS ARE IN INCHES.
2. GENERAL TOLERANCES MAX.±0.20mm.



CIRCUIT DIAGRAM



P.C.B. LAYOUT



TSW77-R38-118-xxx	0.4 MAX	.016 MAX
TSW77-R31-xxx	0.3 MAX	.012 MAX
PROD.	NO.	I
		INCHES.

TSW77-R118-xxx	11.85 [0.467]
TSW77-R83-xxx	8.35 [0.329]
TSW77-R58-xxx	5.85 [0.230]
TSW77-R38-xxx	3.85 [0.152]
TSW77-R31-xxx	3.15 [0.124]
PROD.	NO.
	H

TSW77-Rxx-xxx-LF	
	LEADFREE
31:3.15mm	
38:3.85mm	
58:5.85mm	100:100g/BLACK
61:6.15mm	160:160g/BROWN
83:8.35mm	260:260g/RED
118:11.85mm	320:320g/SALMON
	520:520g/YELLOW



PART NO. TSW77-Rxx-xxx

DWG NO. TSW77-Rxx-xxx

FILE NO.

UNIT / mm

SCALE 1:1

CHECKED BY CY

DRAWING BY

PROJECTION

RoHS Compliant

TOLERANCES ARE

.X ± 0.2
.XX ± 0.1
.XXX ±
AWG

DESCRIP TION:

TACTILE SWITCH R/A 6X6
(MECHANICAL CONTACT TYPE)

AREA

REVISIONS

HK

DATE

煜倫股份有限公司