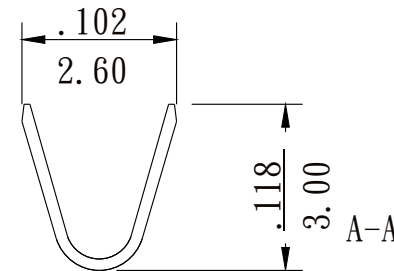
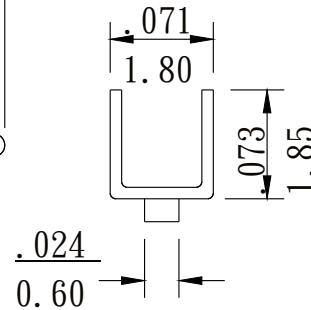
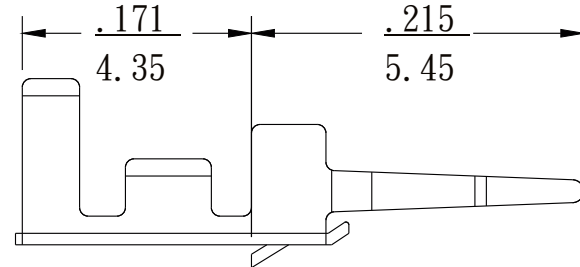
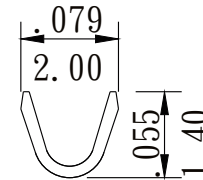
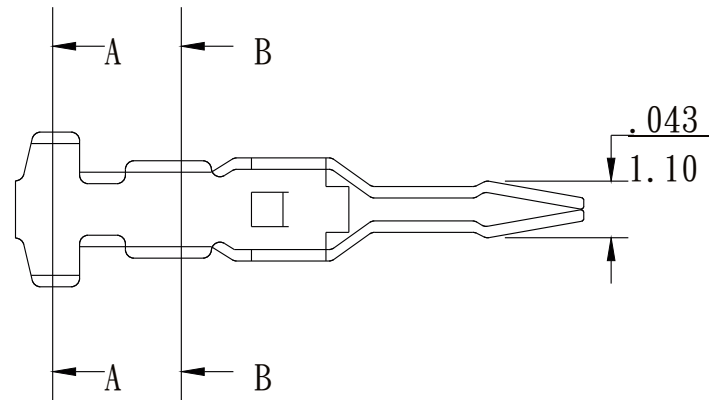


# SCN Crimp Terminal

- \* Material : Brass or Phosphor bronze
- \* Current rating : 2A, AC/DC
- \* Voltage rating : 125V, AC/DC
- \* Applicable wire AWG #28- #24

inch  
mm

B-B



A-A

RoHS Compliant

TOLERANCES ARE

**MORETHANALL**  
PCB CONNECTORS  
Cable ASSEMBLIES

煜倫股份有限公司

www.morethanall.com

DRAWING BY CY

CHECKED BY GENIUS

UNIT / mm

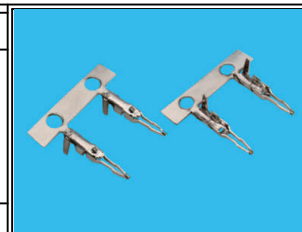
SCALE 1 : 1

DATE

SIZE A4

PPOJECTION

X. ±  
.X ±  
.XX ±  
.XXX ±  
ANG ±



ORDER INFORMATION

SCN-T-24-LF  
SERIES | LEADFREE  
24-28AWG  
TERMINAL

DESCRIPTION: (2.5mm ) Board-In Type Connector