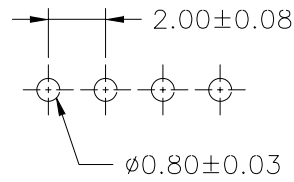
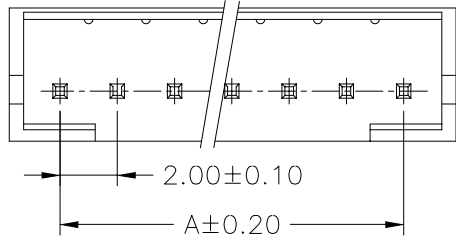


**SPECIFICATIONS**

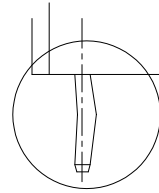
Current Rating: 1A AC,DC  
 Voltage Rating: 100V AC,DC  
 Temperature Range: -25°C ~ +85°C  
 Contact Resistance: 20mΩ Max  
 Insulation Resistance: 1000MΩ Min  
 Withstanding Voltage: 800V AC/minute  
 Pin Material: Brass/Tin-plated  
 Material: Nylon 66,UL94V-0

**Ordering Information & Dimensions**

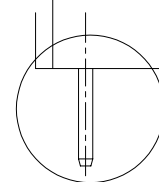
PART NO.	Dimensions	
	A	B
<b>ILS-D-02</b>	2.00	6.00
<b>ILS-D-03</b>	4.00	8.00
<b>ILS-D-04</b>	6.00	10.00
<b>ILS-D-05</b>	8.00	12.00
<b>ILS-D-06</b>	10.00	14.00
<b>ILS-D-07</b>	12.00	16.00
<b>ILS-D-08</b>	14.00	18.00
<b>ILS-D-09</b>	16.00	20.00
<b>ILS-D-10</b>	18.00	22.00
<b>ILS-D-11</b>	20.00	24.00
<b>ILS-D-12</b>	22.00	26.00
<b>ILS-D-13</b>	24.00	28.00
<b>ILS-D-14</b>	26.00	30.00
<b>ILS-D-15</b>	28.00	32.00



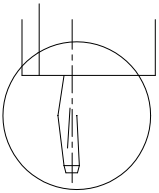
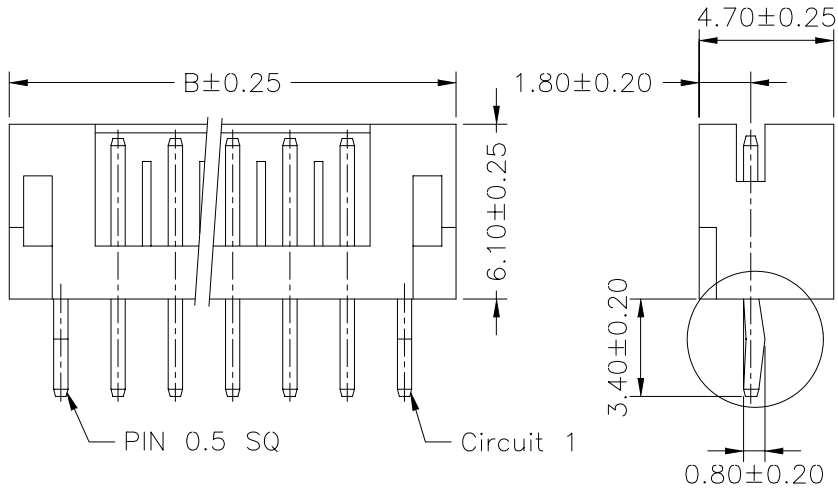
P.C.B LAYOUT



TYPE 1



TYPE 3



TYPE 2



PART NO. **ILS-D-xx**

DWG NO. **ILS-D-xx**

CHECKED BY CY

TOLERANCES ARE

DESCRIP TION: **2.00mm PITCH 180° WAFER**

FILE NO.

DRAWING BY

.X ± 0.2  
.XX ±  
.XXX ±  
AWG

**煜倫股份有限公司**

UNIT / mm

SCALE 1:1

PROJECTION

AREA	REVISIONS	HK	DATE
------	-----------	----	------