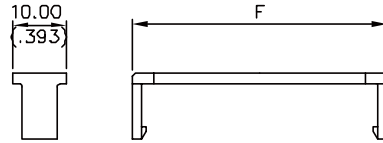
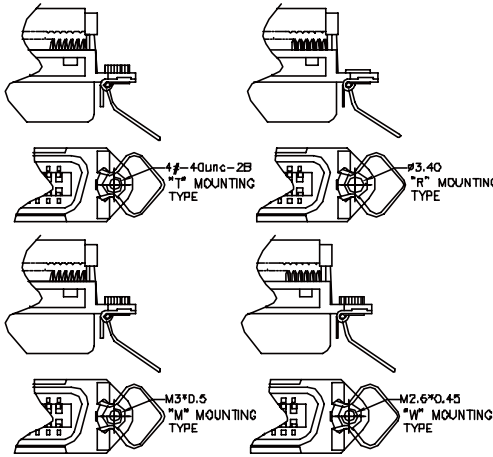
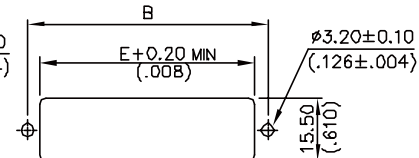
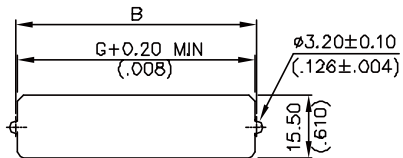


Mounting Types (Option)



STRAIN RELIEF



RECOMMEND REAR MOUNT PANEL

RECOMMEND FRONT MOUNT PANEL

SPECIFICATIONS:

- .Insulator Material: PBT & G/F Reinforced,UL 94-V0
- .Contact Material: Phosphor bronze
- .Strain Relief Material: PBT & G/F Reinforced, UL 94-V0
- .Shell Material: Steel
- .Current rating : 1A : AWG28/1, 2A : AWG26
- .Insulation resistance :  $\geq 1000 \text{ M}\Omega$
- .Dielectric withstanding volatge : 500V,at sea level
- .Operating temperature :  $-25^{\circ}\text{C} \sim +85^{\circ}\text{C}$  (limited by cable)
- .Contact resistance :  $\leq 25\text{m}\Omega$
- .Wire size : AWG26 & AWG28 stranded, 1.27mm conductor center flat cable

73.95 (2.911)	70.90 (2.791)	68.50 (2.697)	73.75 (2.904)	51.84 (2.041)	74.85 (2.947)	82.80 (3.260)	CFM-SNxx-50
58.85 (2.317)	53.75 (2.116)	51.50 (2.027)	58.65 (2.309)	36.72 (1.446)	59.74 (2.352)	67.80 (2.669)	CFM-SNxx-36
45.88 (1.806)	37.50 (1.476)	35.50 (1.398)	45.68 (1.798)	23.76 (.935)	46.78 (1.842)	54.70 (2.154)	CFM-SNxx-24
G $\pm 0.25(.010)$	F $\pm 0.25(.010)$	E $\pm 0.25(.010)$	D $\pm 0.20(.008)$	C $\pm 0.13(.005)$	B $\pm 0.13(.005)$	A $\pm 0.25(.010)$	PART NO.

RoHS Compliant

**MORETHANALL**  
PCB CONNECTORS  
Cable ASSEMBLIES

煜倫股份有限公司

www.morethanall.com

DRAWING BY CY

CHECKED BY GENIUS

UNIT/mm

SCALE 1:1

DATE

SIZE A4

PJECTION

TOLERANCES ARE

X,  $\pm$   
X  $\pm 0.38$   
XX  $\pm 0.25$   
XXX  $\pm$   
ANG  $\pm$



ORDER INFORMATION

CFM-SNxx-xx-LF  
SERIES | LEADFREE  
24.36.50WAY  
N:#4-40UNC  
NM3:M3\*0.5  
NM26:M2.6\*0.45  
FEMALE

DESCRIPTION: