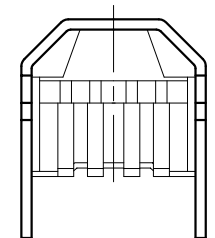
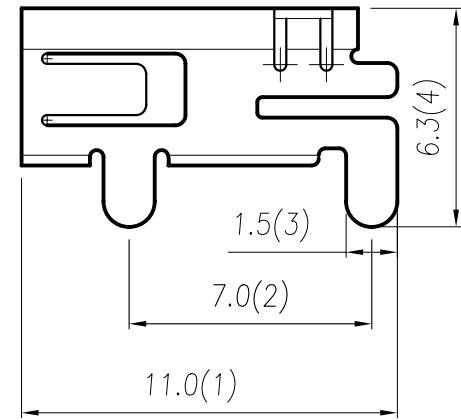
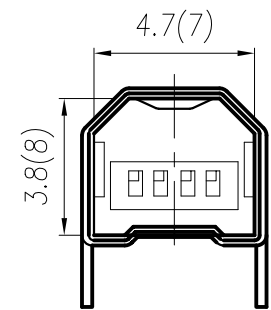


Recommend P.C.B LAYOUT



備註/Note:

- 1.安規/Safety:
- 1-1.規格/Rating:AC 5V/1A
- 1-2.絕緣阻抗/Insulation Resistance:100M ohm Min at DC 500V
- 1-3.絕緣耐壓/Dielectric Withstanding Voltage:AC 100V for 1 minute
- 1-4.接觸阻抗/Contact Resistance :30m ohm or less
- 2.材質/Material:
- 2-1.端子/PIN:磷銅/PHOSPHOR BRONZE;金 15u"/GOLD15u"
- 2-2.膠芯/HOUSING:NYLON
- 2-3.鐵殼/SHELL:磷銅/PHOSPHOR BRONZE;鍍錫 /TIN



PART NO. MSB-SW2-4B

DWG NO. MSB-SW2-4B

CHECKED BY CY

TOLERANCES ARE

FILE NO.

DRAWING BY

.X ± 0.2  
.XX ±  
.XXX ±  
AWG

DESCRIP TION: MINI USB B TYPE 母座 成品圖(DIP)

煜倫股份有限公司

UNIT / mm

SCALE 1:1

PROJECTION

AREA

REVISIONS

HK

DATE