

Specification:

Contact Resistance: 30m Ohm Max.  
 Insulation Resistance: 100M Ohm Min. AT 500V DC  
 Rated Voltage And Current: DC12V. 2A Max; AC 100V. 1A Max  
 Dielectric Withstanding Voltage: 250V AC for 1 Minute  
 Durability (Life Test): 100 Cycles  
 Insertion Force: 4.0KG Maximum.  
 Extraction Force: 0.9KG Minimum.

NO.	NAME	MATERIAL	FINISH	Q'TY	REMARK
1	HOUSING	PBT G.F.	BLACK	1	
2	CONTACT TERM.	PHOS. BRONZE T:0.2	GOLD-TIN PLATED	6	Gold:1~3u'; NI:40~60u'; TIN:120u' (100% pure Tin of lead free plating)
3	GROUND TERM.	BRASS T:0.4	TIN PLATED	1	TIN:120~200u'
4	BOTTOM COVER	PBT G.F.	BLACK	1	
5	SHELL	SPCC, T:0.3	NICKEL PLATED	1	NI:80~120u'

RoHS Compliant

TOLERANCES ARE

**MORETHANALL**  
 PCB CONNECTORS  
 Cable ASSEMBLIES

煜倫股份有限公司

www.morethanall.com

DRAWING BY CY

CHECKED BY GENIUS

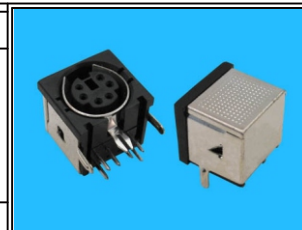
UNIT / mm SCALE 1 : 1

DATE

SIZE A4

X. ± 0.38  
 .X ± 0.25  
 .XX ± 0.13  
 .XXX ± 0.05  
 ANG ±

P PROJECTION



ORDER INFORMATION

MDJ-M-06-LF  
 SERIES | LEADFREE  
 06WAY  
 REAR METAL

DESCRIPTION: