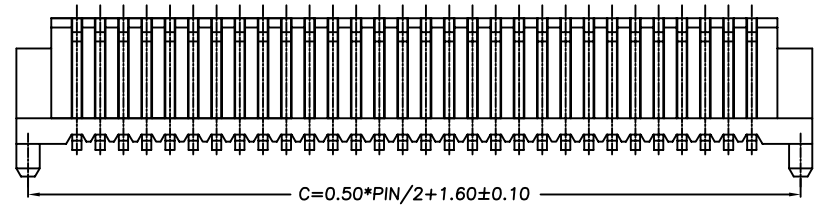
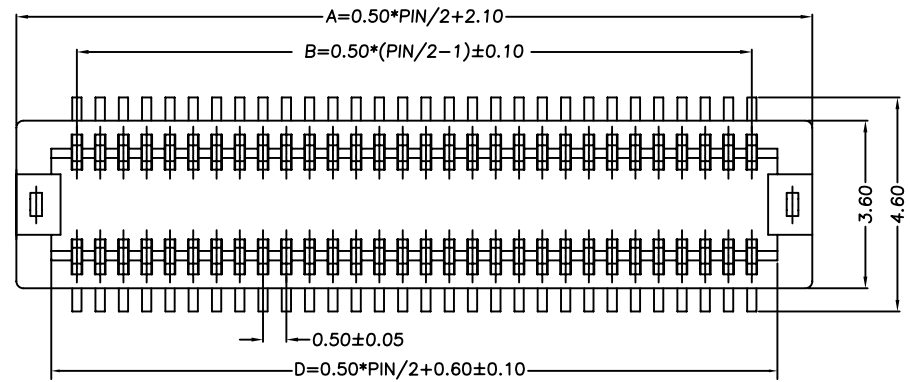
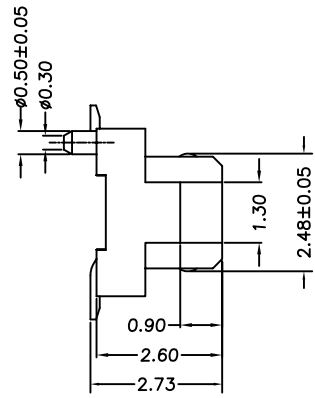


1 2 3 4 5 6 7 8 9 0

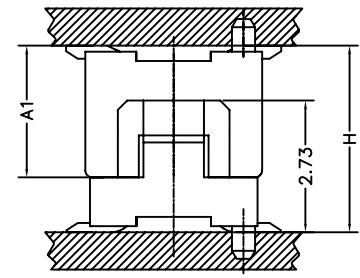


Specifications

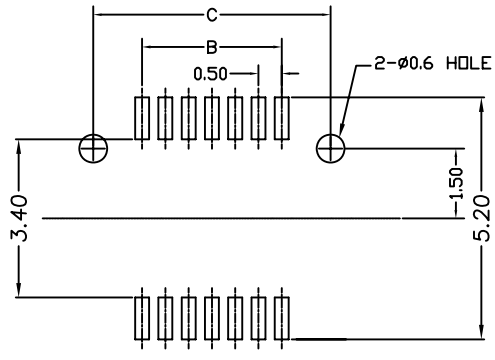
1. Current Rating : 0.5A AC/DC
2. Voltage Rating : 50V AC/DC
3. Contact Resistance : 30m ohm. max.
4. Insulation Resistance : 100M ohm. min.at 100V DC
5. Withstanding Voltage : 100V AC for one minute
6. Operating Temperature Range : -20°C to +105°C

Material and Plating

- 1.Housing : LCP (Natural Color)UL94V-0
- 2.Contact : Phosphor Bronze
- 3.Plating : 3u" Gold Flash



Mating Draw (Ref)



PCB LAYOUT

\*\*Contact Dimension

Contact	DIM. A	DIM. B	DIM. C	DIM. D
14	5.60	3.00	5.10	4.10
20	7.10	4.50	6.60	5.60
30	9.60	7.00	9.10	8.10
32	10.10	7.50	9.60	8.60
36	11.10	8.50	10.60	9.60
40	12.10	9.50	11.60	10.60
50	14.60	12.00	14.10	13.10
60	17.10	14.50	16.60	15.60

\*\*Mating Dimension

P/N(Male)	P/N(Female)	Male Height Dim A1	Mating Height Dim H
DF12-P28P-xxx	DF12-S12P-xxx	2.83	4.00



PART NO. DF12-S12P-xxx

DWG NO. DF12-S12P-xxx

APPROVED BY CY

TOLERANCES ARE

DESCRIPTION:

0.5mm Board To Board Female  
2.7mm Height Without Metal Tab

FILE NO.

DRAWING BY

.X ± 0.2  
.XX ± 0.15  
.XXX  
AWG

AREA

REVISIONS

HK

DATE

煜倫股份有限公司

UNIT / mm

SCALE 1:1

PROJECTION

