

Technical Data:


Material:

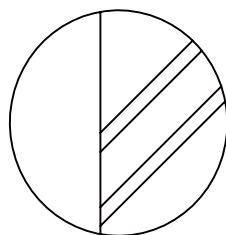
- Contact(metal housing): Brass Machined
- Terminal screw: Steel galvanized and chromitized
or Nickel plater or Tin plated (standard)(optian)
- Solder Pin: Brass with Tin plated
- Insulator body(housing): Polyamide(Glass filled)(UL 94V-0)

Electrical

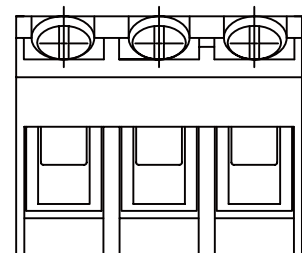
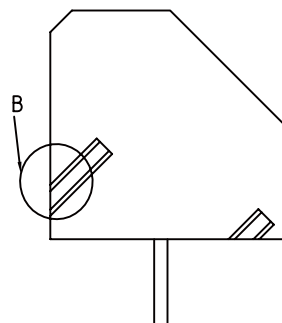
- Voltage rating: 300V
- Current rating: 10 Amps/way max
- Contact resistance: 20mΩ(max)
- Insulation resistance: 5000MΩ/1000V
- Withstanding Voltage: 1500VAC(1min) Test time=60sec/1pcs
- Wire range: 12-22AWG

Mechanical:

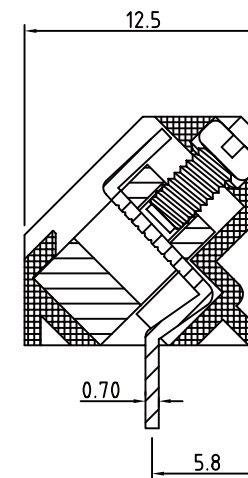
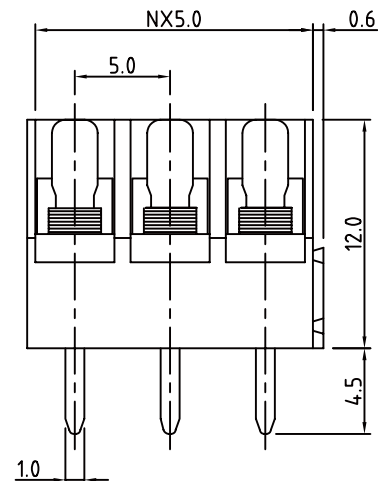
- Torque: 4kgf.cm
- perating temperature: -33°C to +120°C
- Soldring reliability:
Test temperature= 250°C±10°C
5 seconds max
- Safety approval deta: 



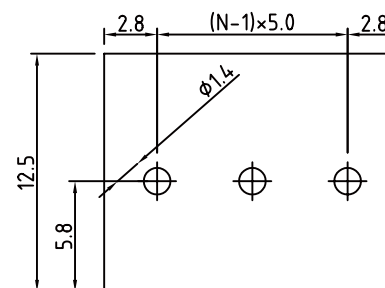
DETTAL B (3/1)



N=Number of contacts



P.C.B. LAYOUT



RoHS Compliant

TOLERANCES ARE

MORETHANALL
PCB CONNECTORS
Cable ASSEMBLIES

煜倫股份有限公司

www.morethanall.com

DRAWING BY CY

CHECKED BY GENIUS

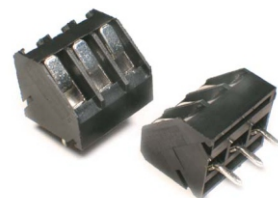
UNIT/ mm SCALE 1:1

DATE

SIZE A4

X, ±
.X ±
.XX ±
.XXX ±
ANG ±

PJECTION 



ORDER INFORMATION

TBH050-A12BK-xx-LF

SERIES | LEADFREE
02~24WAY
BLACK
HIGH 12.0mm
SLANT DIP

DESCRIPTION: