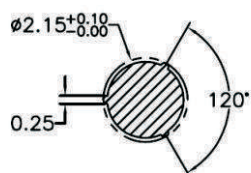
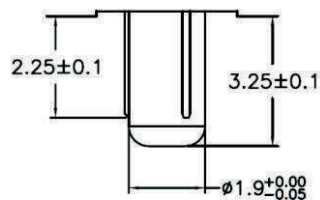
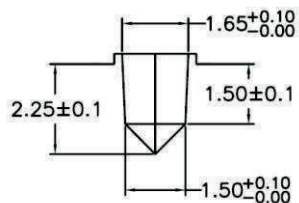


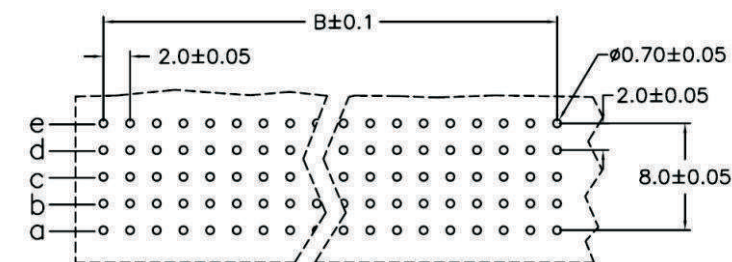
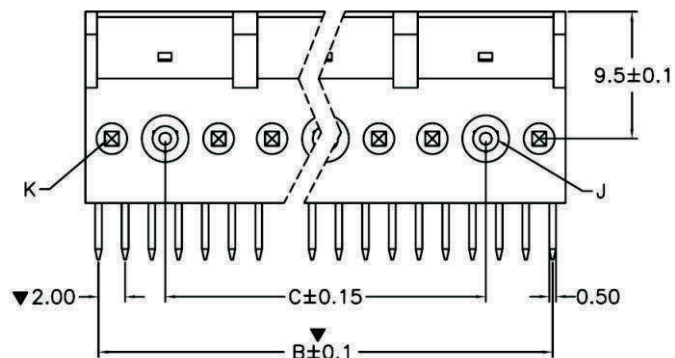
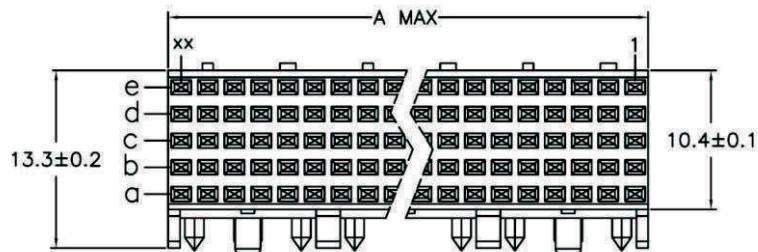
Position	Dimension		
	A	B	C
30	11.95	10.0	0
60	23.95	22.0	12.0
90	35.95	34.0	24.0
120	47.95	46.0	36.0
150	59.95	58.0	48.0
180	71.95	70.0	60.0
210	83.95	82.0	72.0
240	95.95	94.0	84.0
X Length	1	2	
	3.45	4.25	



DETAIL J



DETAIL K



P.C. Board Layout

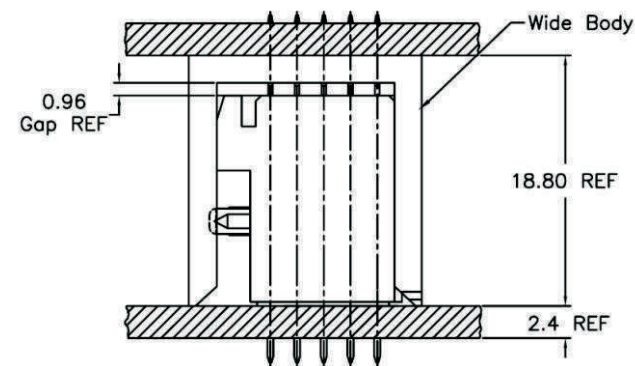
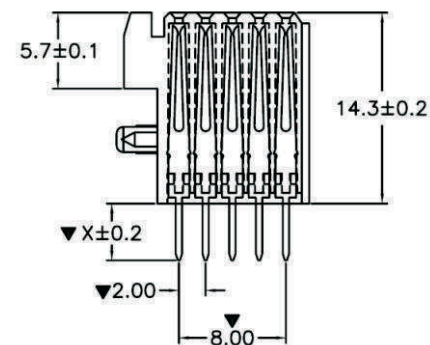
NOTES:

1. Material:

- 1.1 Contacts: Phosphor Bronze.
- 1.2 Housing: 30% Glass filled LCP UL94V-0.

2. Specifications

- 2.1 Current Rating: 1 AMP.
- 2.2 Insulator Resistance: 1000MΩmin. at DC 500V.
- 2.3 Dielectric Withstanding Voltage: AC 1000V For 1 minute.
- 2.4 Contact Resistance: 30mΩmax. at DC 100mA.
- 3. Operating Temperature: -55°C ~ +105°C.



Board-to-Board Offset Application Example

RoHS Compliant

TOLERANCES ARE

**MORETHANALL**  
PCB CONNECTORS  
Cable ASSEMBLIES

DRAWING BY CY

CHECKED BY GENIUS

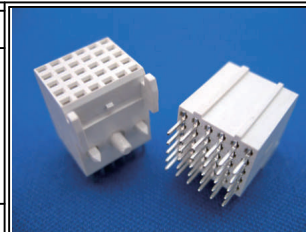
UNIT / mm SCALE 1:1

DATE

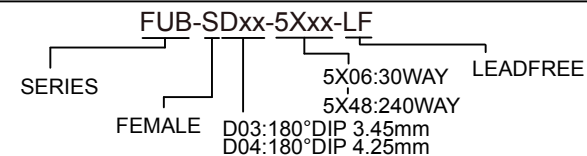
X. ±  
.X ±  
.XX ±  
.XXX ±  
ANG ±

SIZE A4

P PROJECTION



ORDER INFORMATION



DESCRIPTION:

煜倫股份有限公司

www.morethanall.com