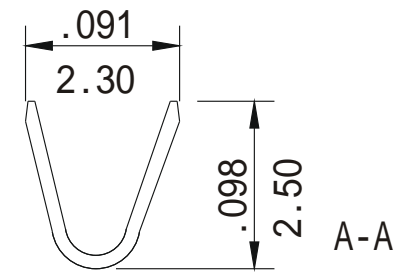
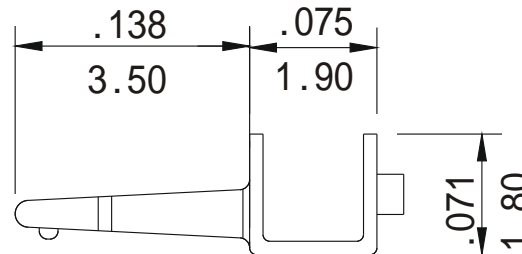
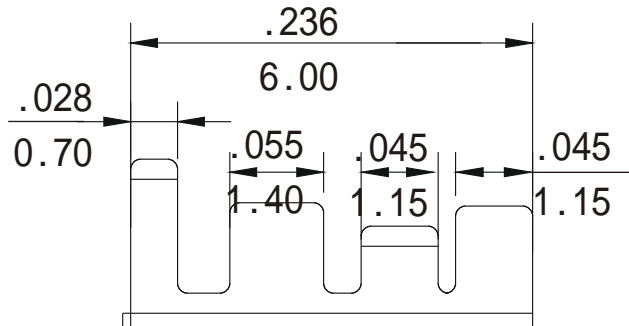
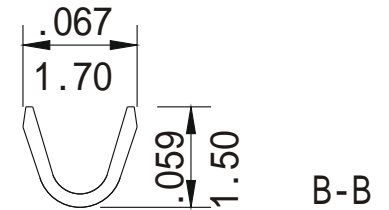
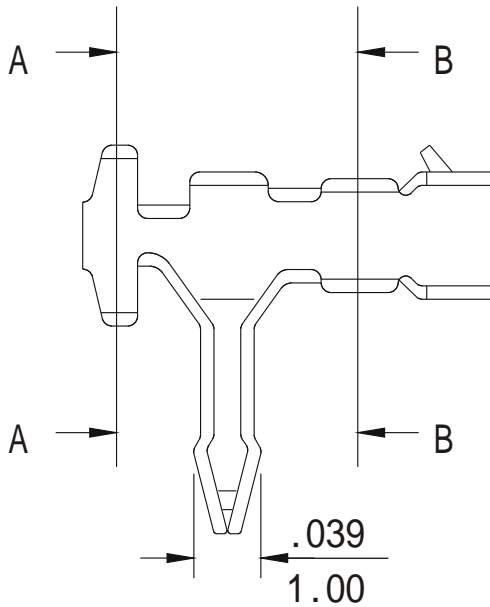


# SCR Crimp Terminal

- \* Material : Brass or Phosphor bronze
- \* Current rating : 2A, AC/DC
- \* Voltage rating : 125V, AC/DC
- \* Applicable wire AWG #28- #22

inch  
mm



**MORETHANALL**  
CONNECTORS  
ASSEMBLIES

PART NO. SCR-T-22

DWG NO. SCR-T-22

CHECKED BY CY

TOLERANCES ARE

DESCRIPTION:

(2.5mm) Board-In Type Connector

FILE NO.

DRAWING BY

.X ±  
.XX ±  
.XXX ±  
AWG

AREA

REVISIONS

HK

DATE

煜倫有限公司

UNIT / mm

SCALE 1:1

PROJECTION

