

Material:

Housing: High Temperature Plastic UL94V-0.

Contacts: Phosphor Bronze.

Electrical Characteristics:

Current Rating: 0.3 AMP.

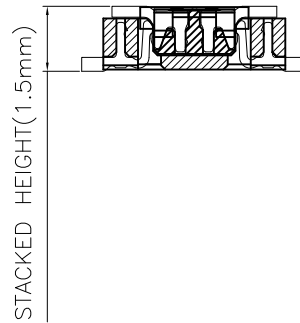
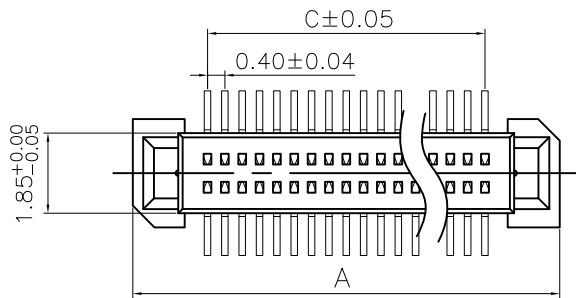
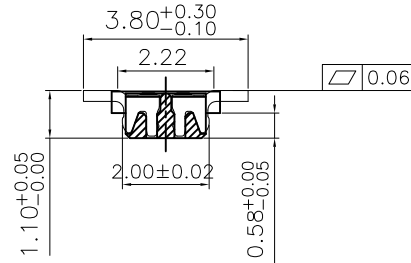
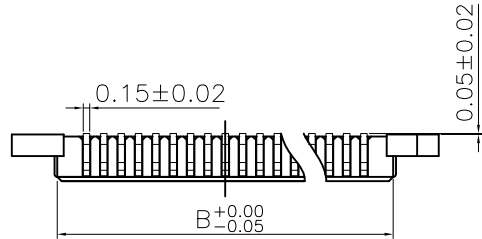
Dielectric Withstanding Voltage: AC 100V For 1 minute

Insulator Resistance: 100MΩ min. at DC100V.

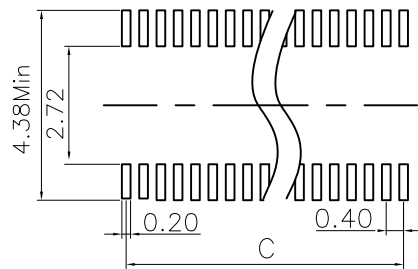
Contact Resistance: 90mΩ max. at AC 1mA.

Operating Temperature: -25°C ~ +85°C .

***RoHS Compliant**



NP04-P03X-xxx-LF
 POSITION LEADFREE
 RoHS Compliant



RECOMMENDED P.C.B. LAYOUT
 TOLERANCE ±0.05
 TOP VIEW

Position Dimension	10 Thru 100
A	0.40 X No. of Positions / 1.5+2.4
B	0.40 X No. of Positions / +1.75
C	0.40 X No. of Positions /

100	23.10	20.95	19.60
90	21.10	18.95	17.60
80	19.10	16.95	15.60
72	17.50	15.35	14.00
70	17.10	14.95	13.60
60	15.10	12.95	11.60
50	13.10	10.95	9.60
40	11.10	8.95	7.60
34	9.90	7.75	6.40
30	9.10	6.95	5.60
26	8.30	6.15	4.80
24	7.90	5.75	4.40
22	7.50	5.35	4.00
20	7.10	4.95	3.60
16	6.30	4.15	2.80
14	5.90	3.75	2.40
12	5.50	3.35	2.00
10	5.10	2.95	1.60
Number of Position	A	B	C



PART NO. NP04-P03X-xxx

DWG NO. NP04-P03X-xxx

FILE NO.

UNIT / mm

SCALE 1:1

CHECKED BY CY

DRAWING BY

PROJECTION

TOLERANCES ARE

.X ± 0.2
 .XX ± 0.1
 .XXX ±
 AWG

DESCRIP TION:

AREA

REVISIONS

HK

DATE

煜倫股份有限公司