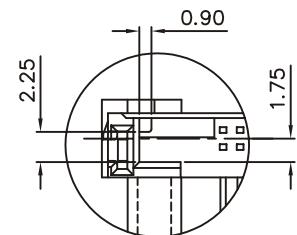
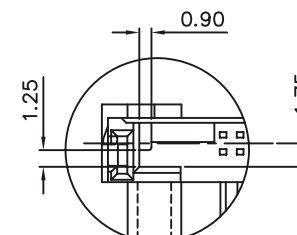


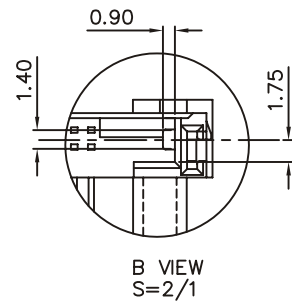
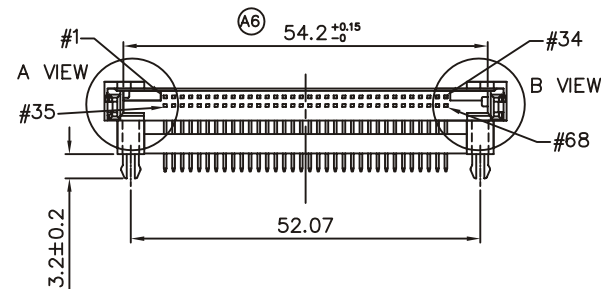
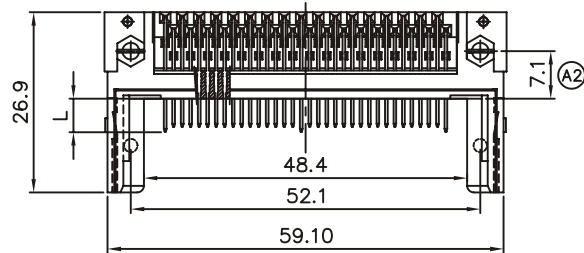
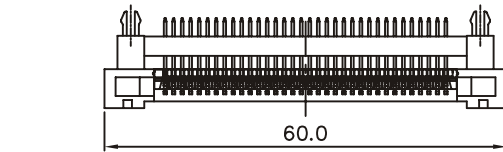
TYPE	CONTACT NO.	L
DETECT	36 ,67	3.5
GENERAL	OTHERS	4.25
POWER	1,17,34,35,51,68	5.0



A VIEW  
S=2/1  
FOR 3.3 V



A VIEW  
S=2/1  
FOR 5.0 V



B VIEW  
S=2/1

**Material:**

Housing: 30% Glass filled LCP UL94V-0.

Contacts: Brass.

**Electrical Characteristics:**

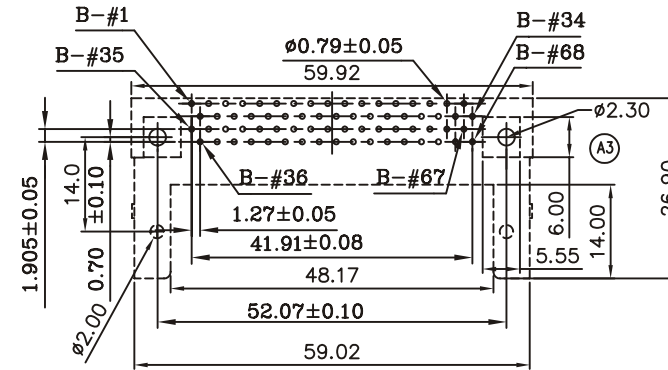
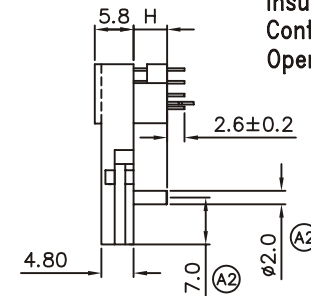
Current Rating: 0.5 AMP.

Dielectric Withstanding Voltage: AC 1000V For 1 minute.

Insulator Resistance: 1000MΩmin. at DC 500V.

Contact Resistance: 30mΩmax. at DC 100mA.

Operating Temperature: -55°C~+105°C.



P.C. Board Layout

PCC-PRxxVxZ-68-LF

LEADFREE

00:0.00mm	
20:2.00mm	3:3.3V
28:2.80mm	5:5.0V
40:4.00mm	
50:5.00mm	
80:8.00mm	
22:2.20mm	

H	Dimension
00	0.00mm
20	2.00mm
28	2.80mm
40	4.00mm
50	5.00mm
80	8.00mm
22	2.20mm

RoHS Compliant

**MORETHANALL**  
CONNECTORS  
ASSEMBLIES

PART NO. PCC-PRxxVxZ-68

DWG NO. PCC-PRxxVxZ-68

FILE NO.

UNIT / mm

SCALE 1:1

CHECKED BY CY

DRAWING BY

PROJECTION



TOLERANCES ARE

.X ± 0.2  
.XX ±  
.XXX ±  
AWG

DESCRIPTION:

AREA

REVISIONS

HK

DATE

煜倫股份有限公司