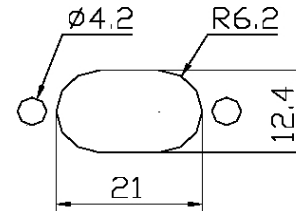
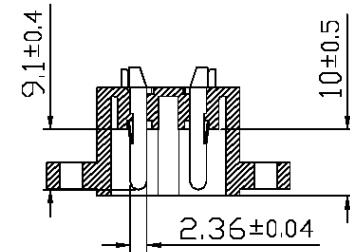


PCB. LAYOUT



PANEL CUT-OUT



SECTIONAL

2.5A/250V~

1. SOLDERING: PIN PHOSPHOR BRONZE 0.3X2T TIN PLATING
2. CONTACT: PIN PHOSPHOR BRONZE Ø2.36 TIN PLATING
3. BODY INSULATOR: PBT UL94V-0

ACC-PRPE-02-LF
LEADFREE

RoHS Compliant

MORETHANALL
CONNECTORS
ASSEMBLIES

PART NO. ACC-PRPE-02

DWG NO. ACC-PRPE-02

CHECKED BY CY

TOLERANCES ARE

DESCRIP TION:

FILE NO.

DRAWING BY

.X ± 0.2
.XX ± 0.1
.XXX ±
AWG

AREA

REVISIONS

HK

DATE

焯倫股份有限公司

UNIT / mm

SCALE 1:1

PROJECTION



--	--	--	--