

RECOMMENDED P.C. BOARD PATTERN DIM.

FH-WR-xx-LF
LEADFREE
RoHS Compliant

| CKT. | A | B | C | D |
|------|-------|-------|-------|-------|
| 2 | 1.25 | 3.05 | 4.25 | 7.65 |
| 3 | 2.50 | 4.30 | 5.50 | 8.90 |
| 4 | 3.75 | 5.55 | 6.75 | 10.15 |
| 5 | 5.00 | 6.80 | 8.00 | 11.40 |
| 6 | 6.25 | 8.05 | 9.25 | 12.65 |
| 7 | 7.50 | 9.30 | 10.50 | 13.90 |
| 8 | 8.75 | 10.56 | 11.75 | 15.15 |
| 9 | 10.00 | 11.80 | 13.00 | 16.40 |
| 10 | 11.25 | 13.05 | 14.25 | 17.65 |
| 11 | 12.50 | 14.30 | 15.50 | 18.90 |
| 12 | 13.75 | 15.55 | 16.75 | 20.15 |
| 13 | 15.00 | 16.80 | 18.00 | 21.40 |
| 14 | 16.25 | 18.05 | 19.25 | 22.65 |
| 15 | 17.50 | 19.30 | 20.50 | 23.90 |

MATERIAL:
 WAFER: HIGH TEMPERATURE PLASTIC
 NYLON46 UL94V-0
 PIN: HIGH STRENGTH BRASS
 WITH TIN OVER NICKEL PLATED

SPECIFICATION:
 CURRENT RATE: 1 AMP
 INSULATION RESISTANCE: 500 M MIN
 CONTACT RESISTANCE: 20 M MAX
 DIELECTRIC VOLTAGE: 500 V AC FOR ONE MINUTE
 OPERATION TEMPERATURE: -25°C TO +85°C

MORETHANALL
CONNECTORS
ASSEMBLIES

PART NO. FH-WR-xx

DWG NO. FH-WR-xx

FILE NO.

UNIT / mm

SCALE 1:1

APPROVED BY CY

DRAWING BY

PROJECTION

TOLERANCES ARE

.X ± 0.5
.XX ± 0.1
.XXX
AWG

DESCRIPTION:

WIRE TO BOARD 1.25mm WAFER SMT R/A

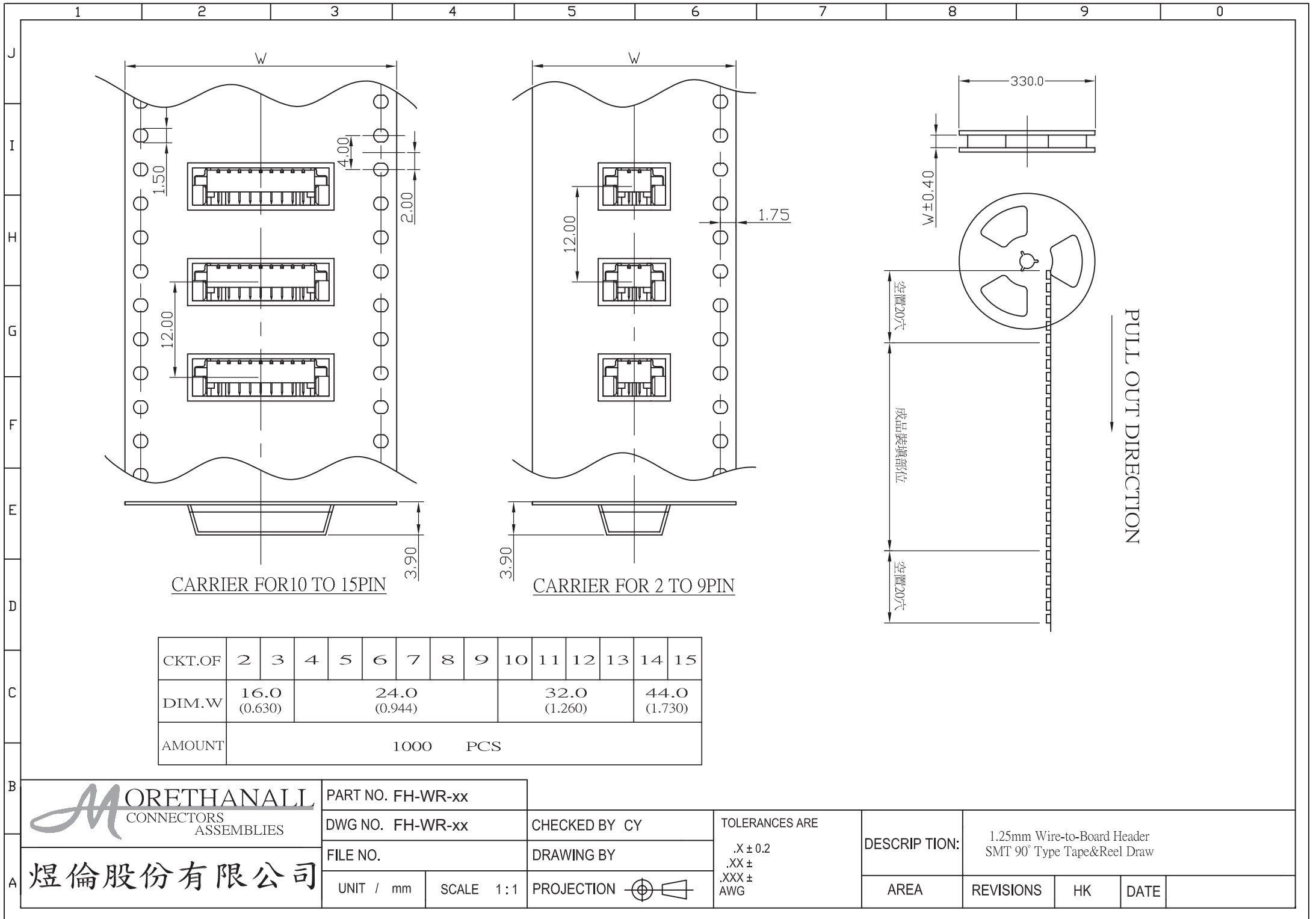
AREA

REVISIONS

HK

DATE

煜倫股份有限公司



| | | | | | | | | | | | | | | |
|--------|-----------------|---|---|---|-----------------|---|---|-----------------|----|----|-----------------|----|----|----|
| CKT.OF | 2 | 3 | 4 | 5 | 6 | 7 | 8 | 9 | 10 | 11 | 12 | 13 | 14 | 15 |
| DIM.W | 16.0 (0.630) | | | | 24.0 (0.944) | | | 32.0 (1.260) | | | 44.0 (1.730) | | | |
| AMOUNT | 1000 PCS | | | | | | | | | | | | | |

MORETHANALL
CONNECTORS
ASSEMBLIES

焯倫股份有限公司

PART NO. FH-WR-xx

DWG NO. FH-WR-xx

FILE NO.

UNIT / mm

SCALE 1:1

CHECKED BY CY

DRAWING BY

PROJECTION

TOLERANCES ARE

.X ± 0.2
.XX ±
.XXX ±
AWG

DESCRIPTION:

1.25mm Wire-to-Board Header
SMT 90° Type Tape&Reel Draw

AREA

REVISIONS

HK

DATE