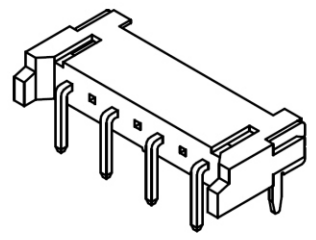
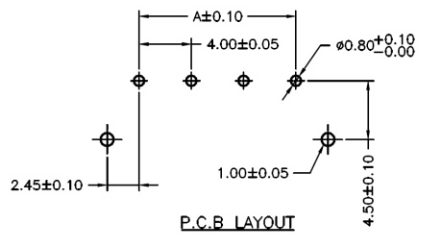
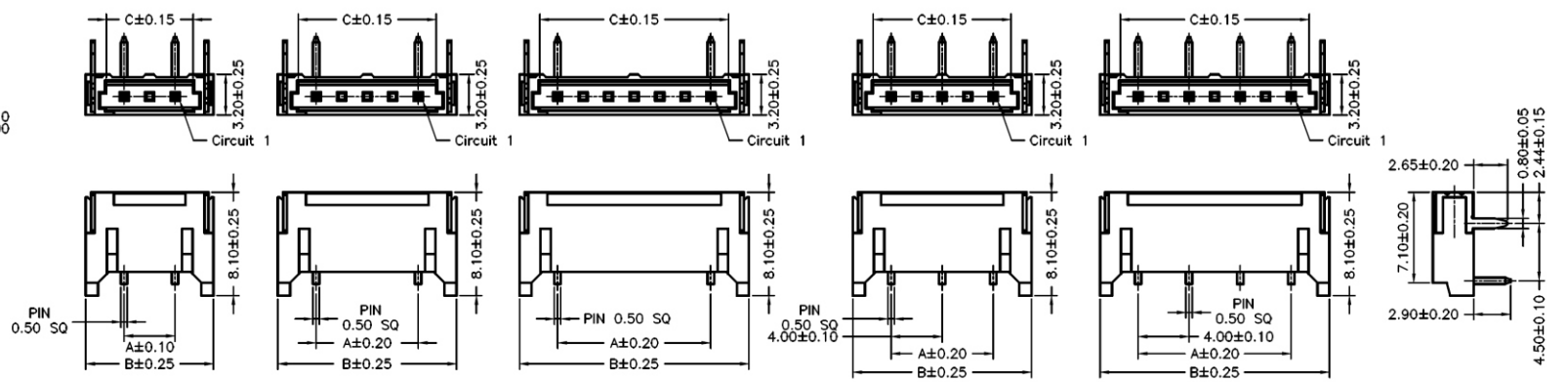


1 2 3 4 5 6 7 8 9 0

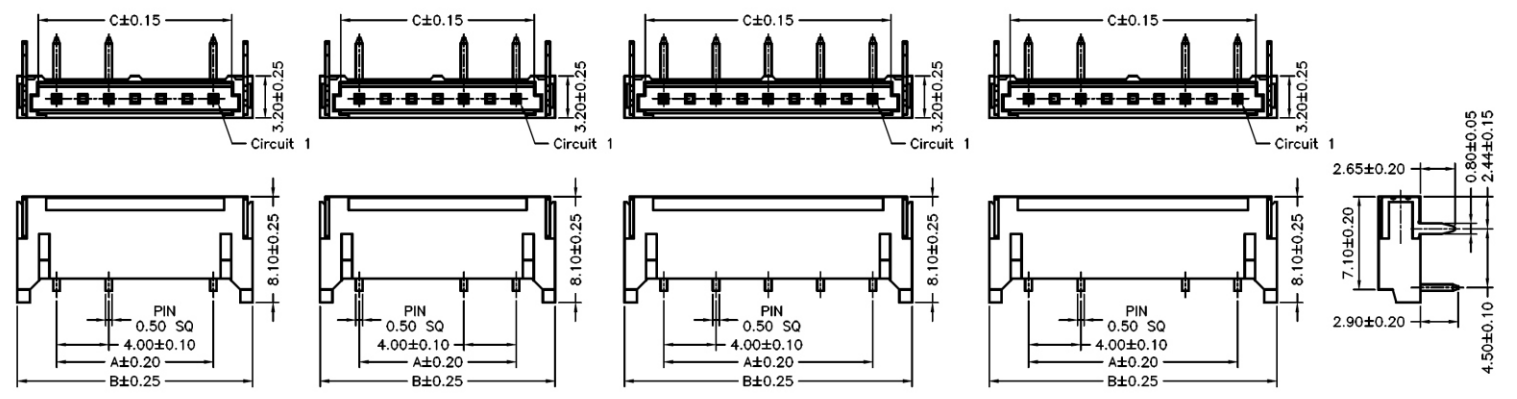
J
I
H
G
F
E
D
C
B
A



SPECIFICATIONS
 Current Rating: 1A AC,DC
 Voltage Rating: 600V AC,DC
 Temperature Range: -25°C ~ +85°C
 Contact Resistance: 10mΩ Max
 Insulation Resistance: 1000MΩ Min
 Withstanding Voltage: 1800V AC/minute
 Pin Material: Brass/Tin-plated
 Solder Tabs: Brass/Tin-plated
 Material: Nylon 6T,UL94V-0
 Color: Natural(Beige)



BH-R-0302 **BH-R-0502** **BH-R-0702** **BH-R-0503** **BH-R-0704**



BH-R-0703EL **BH-R-0703ER** **BH-R-0905** **BH-R-0904**

BH-R-xxxx-LF
 LEADFREE
RoHS Compliant

Ordering Information & Dimensions

PART NO.	Dimensions		
	A	B	C
BH-R-0302	4.00	10.00	6.80
BH-R-0502	8.00	14.00	10.80
BH-R-0702	12.00	18.00	14.80
BH-R-0503	8.00	14.00	10.80
BH-R-0704	12.00	18.00	14.80
BH-R-0703EL	12.00	18.00	14.80
BH-R-0703ER	12.00	18.00	14.80
BH-R-0905	16.00	22.00	18.80
BH-R-0904	16.00	22.00	18.80



PART NO. BH-R-xxxx		CHECKED BY CY		TOLERANCES ARE .X ± 0.2 .XX ± .XXX ± AWG	DESCRIP TION:	AREA	REVISIONS	HK	DATE
DWG NO. BH-R-xxxx		DRAWING BY							
FILE NO.		PROJECTION							
UNIT / mm	SCALE 1:1								

煜倫股份有限公司