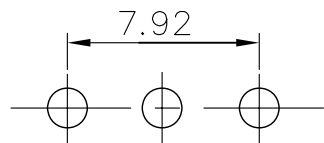
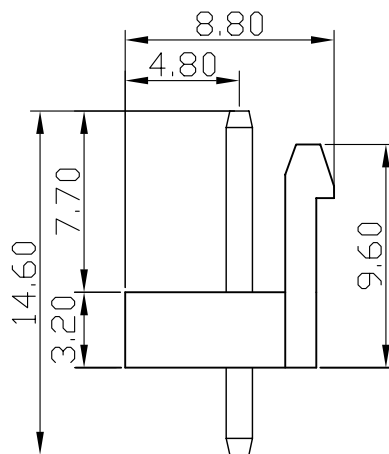
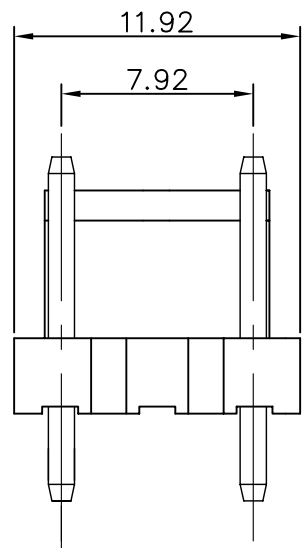


1.14mm Square Pin



PCB LAYOUT COMPONENT SIDE

Specifications

Current Rating: 7A AC, DC
 Voltage Rating: 250V AC Maximum
 Operating Temp: -25°C ~ +85°C
 Contact Resistance: 10MΩ Max
 Insulation Resistance: 1000MΩ Min
 Terminal Material: Brass/Tin-plated
 Material: Nylon 66, UL94V-0

VH-D-03EE-LF
 T
 LEADFREE

RoHS Compliant



PART NO. VH-D-03EE

DWG NO. VH-D-03EE

APPROVED BY CY

TOLERANCES ARE

DESCRIPTION:

FILE NO.

DRAWING BY

.X
.XX
.XXX
AWG

煜倫股份有限公司

UNIT / mm

SCALE 1:1

PROJECTION

AREA

REVISIONS

HK

DATE