

1 2 3 4 5 6 7 8 9 0

J

I

H

G

F

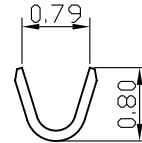
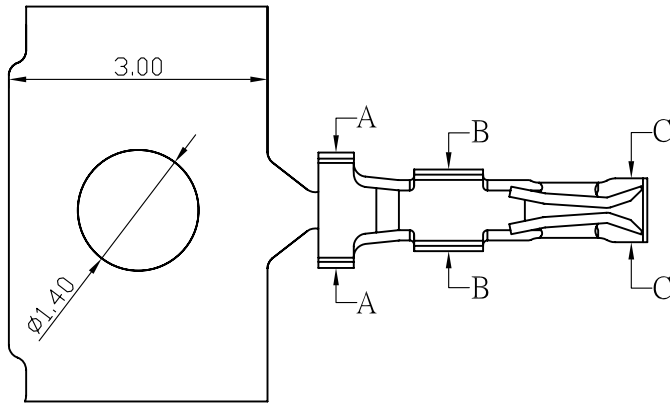
E

D

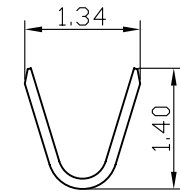
C

B

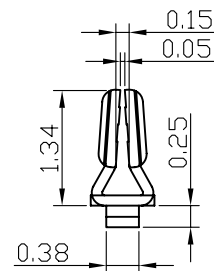
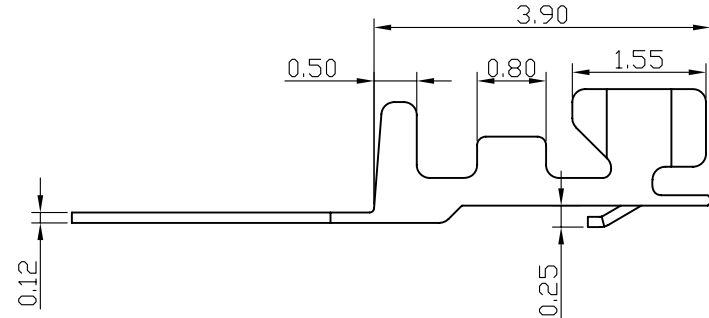
A



Section A-A



Section B-B



Section C-C

SPECIFICATIONS

Electrical
 Current Rating: 1A AC, DC
 Voltage Rating: 50V AC/ max.
 Operating Temp.: -25°C ~ +85°C
 Insulation Resistance: 100MΩ/ min.
 Dielectric Withstanding Voltage: 500V AC/ min.
 Contact Resistance: 20MΩ/ max.

Material
 Terminal material: Phosphor Bronze/ Tin-plated
 Wire Range: 28 to 32AWG

SH-T-28-LF
 LEADFREE

RoHS Compliant



PART NO. SH-T-28		APPROVED BY CY		TOLERANCES ARE		DESCRIP TION:				
DWG NO. SH-T-28		DRAWING BY		.X .XX .XXX AWG						
UNIT / mm		SCALE 1:1		PROJECTION		AREA	REVISIONS	HK	DATE	

焜倫股份有限公司