

SPECIFICATION

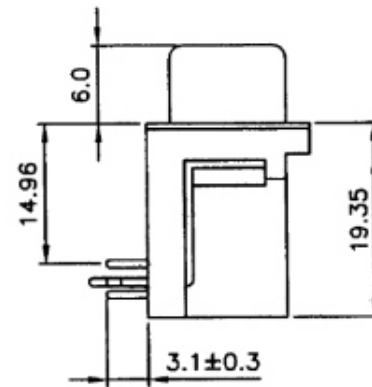
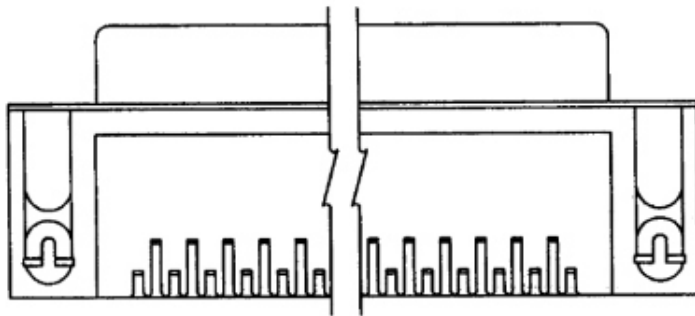
MATERIAL

Insulator: PBT, rated UL94V-0 (standard)
 Contacts: Brass (standard) ; Phosphor Bronze (choose)
 Shell: Steel
 Rivet, Boardlock: Copper alloy
CONTACT PLATING

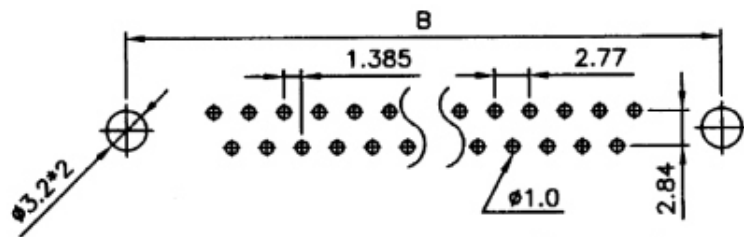
Underplate: 50u" Nickel
 Contact area: 1u"~30u" Selective Gold
 Solder tails area: 100u" Tin/Lead

ELECTRICAL

Operation voltage: 250 VAC max.
 Current rating: 3 Amps max.
 Contact resistance: 15 mohms max.
 Insulation resistance: 3000 Mohms min @ 500 VDC
 Dielectric withstanding voltage: 1000 VAC / minute
 Operating temperature: -55°C TO +105°C



DRL-SGN-xx-LF
 LEADFREE
 RoHS Compliant



RECOMMENDED P.C.B LAYOUT(TOP VIEW)

POSITION	A	B	C
9P	16.30	25.00	30.8
15P	24.60	33.30	39.2
23P	35.30	44.30	50.3
25P	38.30	47.10	53.1
37P	54.80	63.50	69.4

MORETHANALL
 CONNECTORS
 ASSEMBLIES

PART NO. DRL-SGN-xx

DWG NO. DRL-SGN-xx

FILE NO.

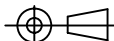
UNIT / mm

SCALE 1:1

CHECKED BY CY

DRAWING BY

PROJECTION



TOLERANCES ARE

.X ± 0.2
 .XX ±
 .XXX ±
 AWG

DESCRIPTION:

AREA

REVISIONS

HK

DATE

煜倫股份有限公司