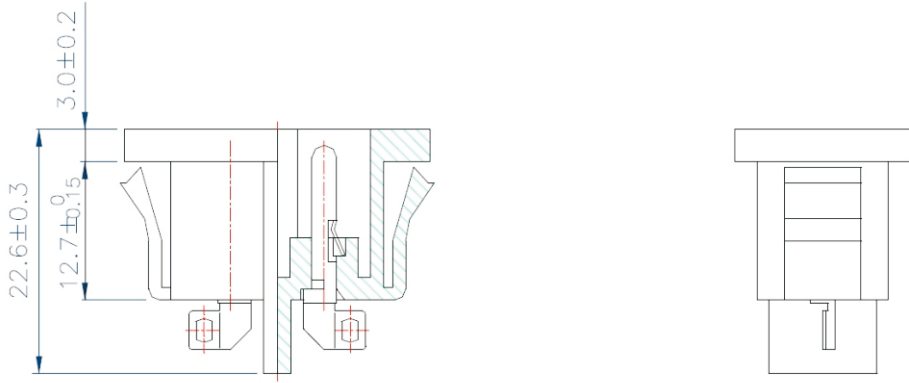


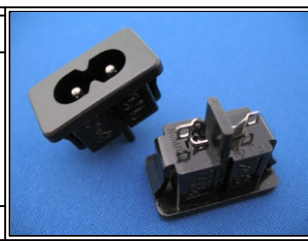
PANEL COUOUT THICKNESS 0.6mm~1.5mm

STANDARD: IEC 320 C8
 RATING : 2.5A/250V AC
 APPROVALS: UL/CSA/VDE/ÖVE/SEV/
 DEMKO/NEMKO/SEMKO/FIMKO



MORETHANALL
 PCB CONNECTORS
 Cable ASSEMBLIES
 煜倫股份有限公司
 www.morethanall.com

RoHS Compliant		TOLERANCES ARE
DRAWING BY CY		X. ±
CHECKED BY GENIUS		.X ±
UNIT / mm	SCALE 1 : 1	.XX ±
DATE		.XXX ±
SIZE A4	PPOJECTION	ANG ±



ORDER INFORMATION
 ACC-PSHPA-02-LF
 SERIES | | | LEADFREE
 | | | 02 WAY
 | | | PANEL FRONT
 | | | HORIZONTAL PIN
 | | | SOLDER
 | | | MALE

DESCRIPTION: