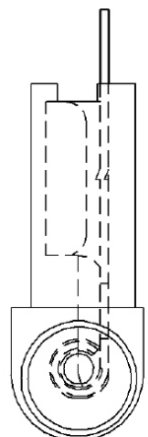


NOTE :

1. MAXIMUM ELECTRIC CURRENT :

A.W.G.	22	20	18
AMP.	3	4	7
2. MAXIMUM ELECTRICAL RATING : 105°C 300 VOLTS MAX.
3. INSULATION MATERIAL : NYLON
4. INSULATION COLOR : RED
5. TERMINAL MATERIAL : BRASS
6. WIRE RANGE : 22-18 A.W.G. (0.5-0.75mm²)
7. NEMA TAB : 0.020 inch * 0.187 inch (0.5 mm * 4.75 mm)
8. TERMINAL SURFACE TREATMENT : TIN PLATED
9. TERMINAL THICKNESS : 0.40 mm



RoHS Compliant

TOLERANCES ARE

MORETHANALL
PCB CONNECTORS
Cable ASSEMBLIES

煜倫股份有限公司

www.morethanall.com

DRAWING BY CY

CHECKED BY GENIUS

UNIT / mm

SCALE 1 : 1

DATE

SIZE A4

X. ±

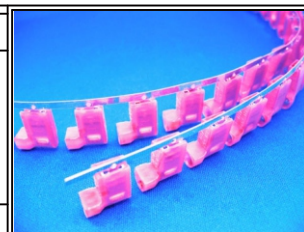
.X ±

.XX ±

.XXX ±

ANG ±

P PROJECTION



ORDER INFORMATION

Q187-GT5NFR-18-LF
 SERIES | | | | LEADFREE
 FLAG | | | | REEL
 | | | | 18-22AWG
 TERMINAL | | | | FULL
 | | | | NYLON
 | | | | 0.5t

DESCRIPTION: