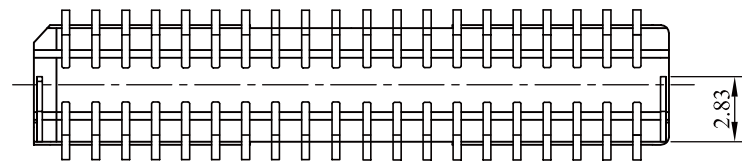
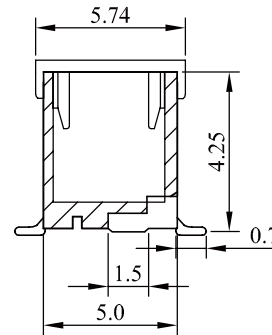
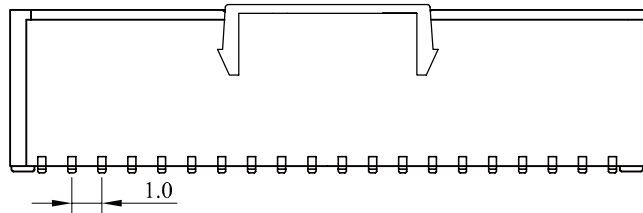


RECOMMENDED P.C. BOARD PATTERN DIM.



Specifications

Electrical

- Voltage Rating: 50VAC DC
- Current Rating: 1.0A AC DC
- Contact Resistance: Initial value/20mΩmax
After environmental testing/40mΩmax
- Insulation Resistance: 100MΩmin
- Temperature Range: -25°C~+85°C
- Withstanding voltage: 500V AC/minute

Material and Finish

- Header contact: Phosphor bronze, nickel-undercoated, tin-plated
- Water: Glass-filled polyamide, UL94V-0, natural (ivory)
- Solder tab: Brass, copper-undercoated, tin/lead-plated

Circuits	Dimension mm (in.)		Part No.
	A	B	
2*10	9.0(.354)	12.3(.484)	SHD-VXTC-20
2*15	14.0(.551)	17.3(.681)	SHD-VXTC-30
2*20	19.0(.748)	22.3(.878)	SHD-VXTC-40
2*25	24.0(.945)	27.3(1.075)	SHD-VXTC-50

RoHS Compliant

TOLERANCES ARE

MORETHANALL
PCB CONNECTORS
Cable ASSEMBLIES

煜倫股份有限公司

www.morethanall.com

DRAWING BY CY

CHECKED BY GENIUS

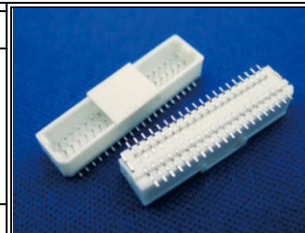
UNIT/ mm SCALE 1:1

DATE

SIZE A4

PJECTION

X, ±
.X ±
.XX ±
.XXX ±
ANG ±



ORDER INFORMATION

SHD-VXTC-xx-LF
SERIES | | | LEADFREE
| | | 20~50WAY
| | | CAP
| | | TIN
| | | NON POST
| | | 180°SMT

DESCRIPTION: SHD 1.0mm Wire to Board Wafer SMT 180W(雙排無柱)