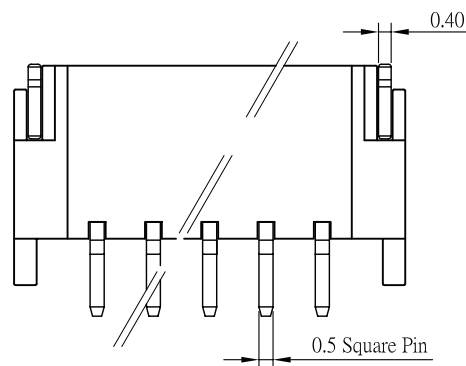
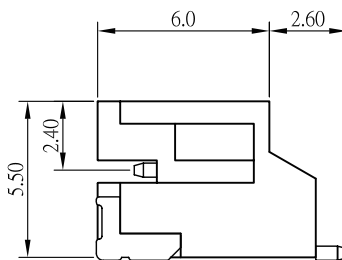
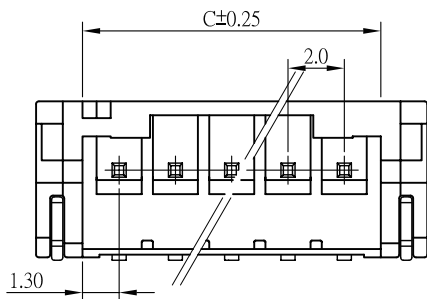


RECOMMENDED P.C. BOARD PATTERN DIM.



SPECIFICATIONS

Electrical

Voltage Rating: 100V AC, DC
 Current Rating: 2A AC, DC
 Withstand Voltage: 800V AC/ min
 Insulation Resistance: 1000M Ω / min
 Temperature Range: -25°C ~ +85°C

Material

Wafer: High Temperature Plastic Nylon 6T UL94V-0
 Pin: High Strength Brass With Tin Over Nickel Plated
 Applicable PC Board Thickness: 0.8 ~ 1.6mm
 Contact Resistance: Initial Value / 10m Ω max.
 After environmental testing 20m Ω max.

CKT.	A	B	C
2	2.00	7.90	4.80
3	4.00	9.90	6.80
4	6.00	11.90	8.80
5	8.00	13.90	10.80
6	10.00	15.90	12.80
7	12.00	17.90	14.80
8	14.00	19.90	16.80
9	16.00	21.90	18.80
10	18.00	23.90	20.80
11	20.00	25.90	22.80
12	22.00	27.90	24.80
13	24.00	29.90	26.80
14	26.00	31.90	28.80
15	28.00	33.90	30.80
16	30.00	35.90	32.80

RoHS Compliant

TOLERANCES ARE

MORETHANALL
 PCB CONNECTORS
 Cable ASSEMBLIES

DRAWING BY CY

CHECKED BY GENIUS

UNIT/ mm

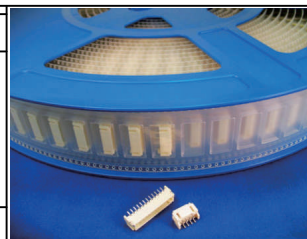
SCALE 1:1

DATE

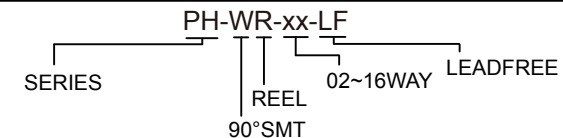
SIZE A4

X. \pm
 .X \pm
 .XX \pm
 .XXX \pm
 ANG \pm

PJECTION



ORDER INFORMATION



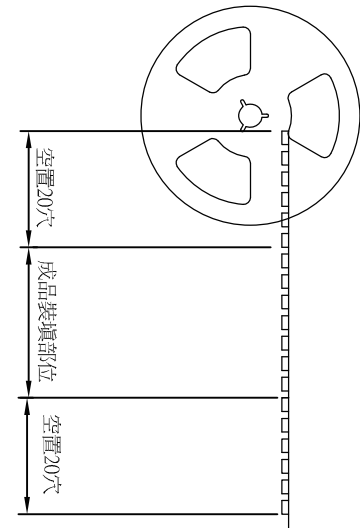
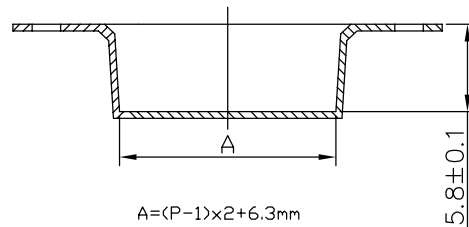
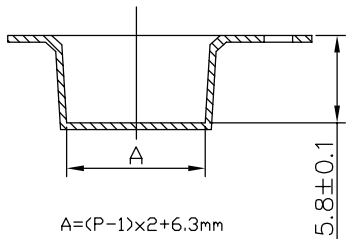
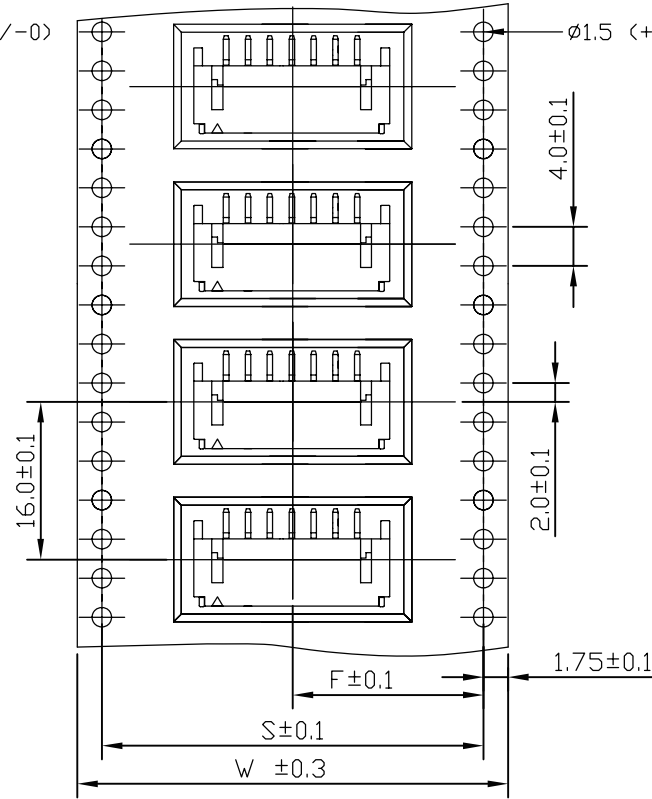
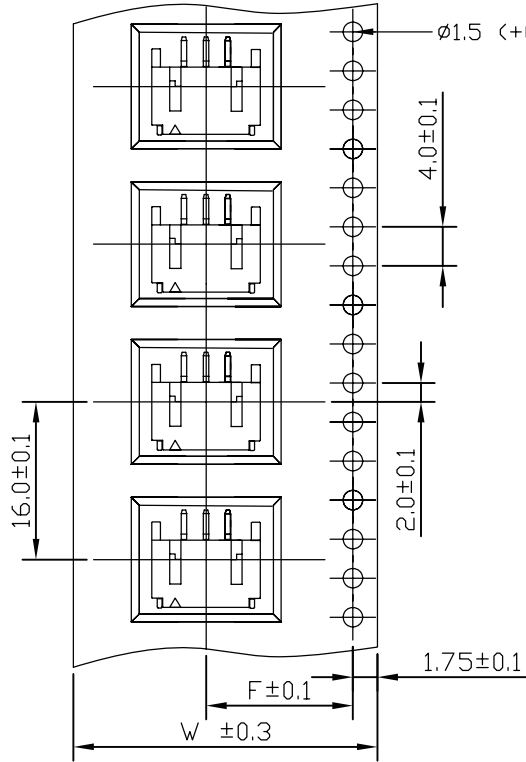
DESCRIPTION: 2.0mm Wire-to-Board Header SMD 90° SM3 Type

煜倫股份有限公司

www.morethanall.com

2-4P Contacts

5-16P Contacts



PULL OUT DIRECTION

P=Poles	W	F	S	Q'TY/Reel
02	24	11.5		1000PCS
03	24	11.5		1000PCS
04	24	11.5		1000PCS
05	32	14.2	28.4	1000PCS
06	32	14.2	28.4	1000PCS
07	32	14.2	28.4	1000PCS
08	44	20.2	40.4	1000PCS
09	44	20.2	40.4	1000PCS
10	44	20.2	40.4	1000PCS
11	44	20.2	40.4	1000PCS
12	44	20.2	40.4	1000PCS
13	44	20.2	40.4	1000PCS
14	56	26.2	52.4	1000PCS
15	56	26.2	52.4	1000PCS
16	56	26.2	52.4	1000PCS

RoHS Compliant

MORETHANALL
PCB CONNECTORS
Cable ASSEMBLIES

煜倫股份有限公司

www.morethanall.com

DRAWING BY CY

CHECKED BY GENIUS

UNIT/mm

SCALE 1:1

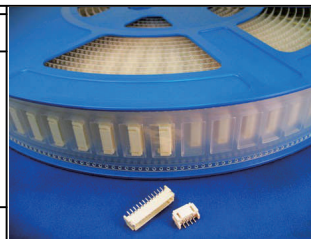
DATE

SIZE A4

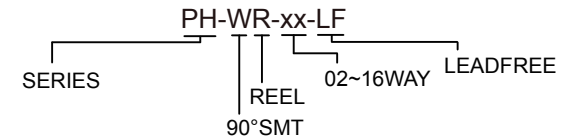
TOLERANCES ARE

X. ±
.X ±
.XX ±
.XXX ±
ANG ±

PJECTION



ORDER INFORMATION



DESCRIPTION: 2.0mm Wire-to-Board Header SMD 90° SM3 Type