

1 2 3 4 5 6 7 8 9 0

FEATURES:

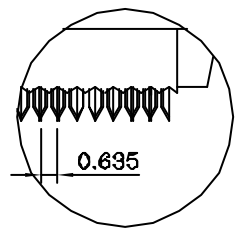
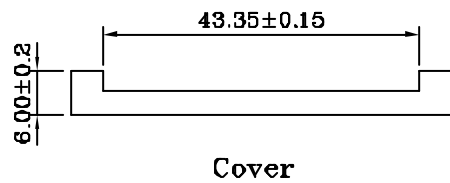
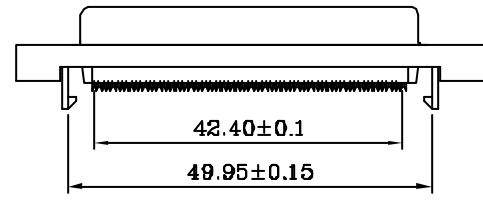
- Half pitch 1.27mm(.050") series
- D-SUB female connector for 0.635mm(.025") pitch flat cable
- Panel mount receptacle assemblies bracket with latch block and without latch block
- Die-Cast body provided EMI/RFI shielded

MATERIALS:

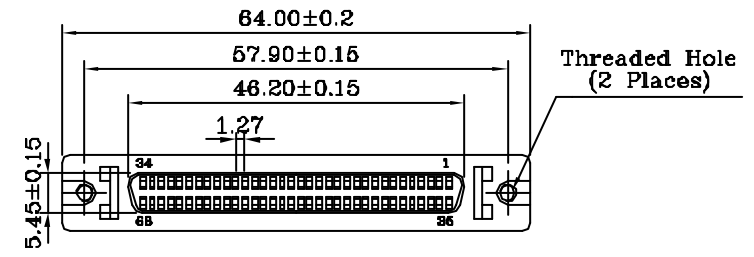
- Housing And Cover: Plastic thermoplastic P.B.T UL94V-0 black
- Contacts: Phosphor bronze gold selective plated
- Bracketshell: Die-Cast zinc nickel plated over copper

ELECTRICAL:

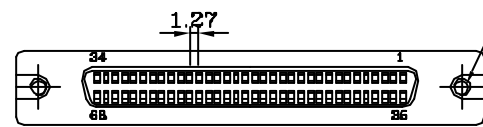
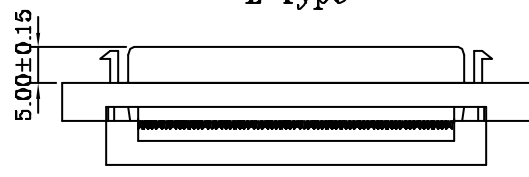
- Current Rating: 1 Amp
- Insulation Resistance: 500MΩ/Min
- Withstanding Voltage: 500V AC/Min
- Contact Resistance: 35mΩ Max
- Temperature Range: -55°C ~ +105°C



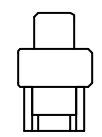
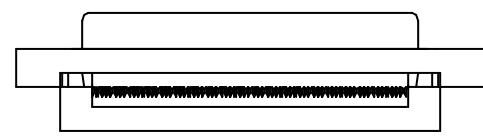
View A



L Type



S Type



HPD-SFL-068-LF

LEADFREE

RoHS Compliant



PART NO. HPD-SFL-068		CHECKED BY CY	TOLERANCES ARE .X ± 0.2 .XX ± .XXX ± AWG	DESCRIPTION: 1.27mm(.050") Pitch D-SUB 68P Female Connector I.D.C For 0.635mm(.025") Flat Cable	AREA	REVISIONS	HK	DATE
DWG NO. HPD-SFL-068								
FILE NO.		DRAWING BY						
UNIT / mm	SCALE 1:1	PROJECTION						

煜倫股份有限公司