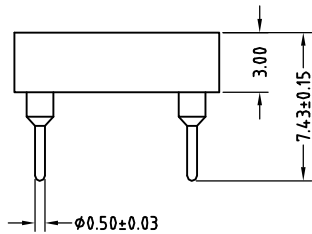
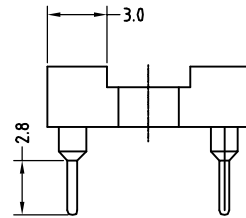
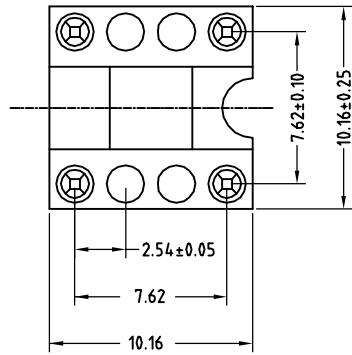
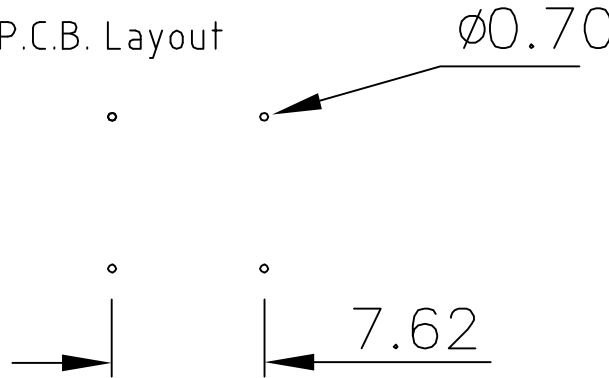


Technical Data



P.C.B. Layout



Material:
 Pin(outer sleeve): Brass,machined CuZn38Pb2
 Clip(contact 4 finger): Beryllium Copper,Phosphor Bronze heat treated
 Plating(outer sleeve):
 Tin plated:2um/80u" Ni, 5um/200u" Sn
 Gold Plated:2um/80u" Ni,Full gold
 Plating(contact): 2um/80u" Ni, gold or Tin plated
 Insulator(black): Glass filled thermoplastic polyester UL94V-0

Electrical:
 Current rating: 3Amps/contact max.
 Contact resistance: 4m /contact
 Insulation resistance: ! 1000M at V=100V
 Operating voltage: 60VAC/DC

Mechanical:
 Average insertion force with steel pin of 0.43mm/0.17": <250g
 Average withdrawal force with steel pin of 0.43mm/0.17": >50g min.
 Mechanical life cycle:min.200
 Operating temperatures: Gold Plsted:-55?XC to+105?XC
 Tin plated:-40?XC to+105?XC
 Soldering temperature: +240?XC,10s max.

RoHS Compliant

TOLERANCES ARE

MORETHANALL
 PCB CONNECTORS
 Cable ASSEMBLIES

煜倫股份有限公司

www.morethanall.com

DRAWING BY CY

CHECKED BY GENIUS

UNIT / mm

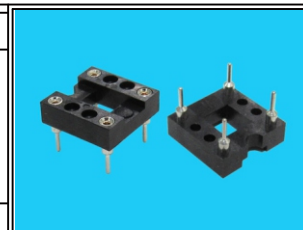
SCALE 1 : 1

DATE

SIZE A4

PPOJECTION

X, ±
 .X ±
 .XX ±
 .XXX ±
 ANG ±



ORDER INFORMATION

OSC-D03-0804-LF
 SERIES | LEADFREE
 8P4C
 SPACING 7.62mm
 DIP 180°

DESCRIPTION: