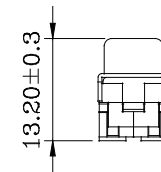
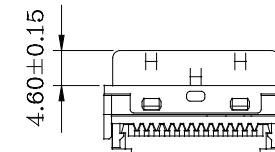
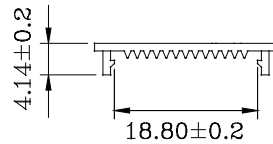
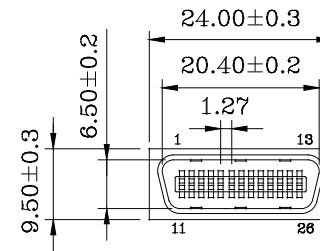
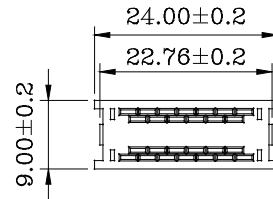
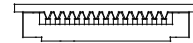
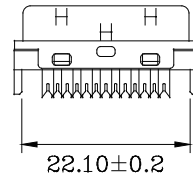


• **MATERIALS:(RoHS Compliant)**

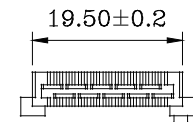
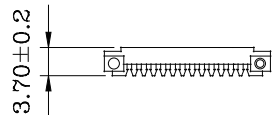
Housing And Cover: Plastic Thermoplastic
P.B.T UL94V-0 Black
Contacts: Phosphor Bronze Gold
Selective Plated
Front Shell: Steel Nickel Plated
Over Copper

• **ELECTRICAL CHARACTERISTICS:**

Contact Current Rating: 1 Amp
Dielectric Withstanding Voltage: 500V AC
Insulation Resistance: >500MΩ/Min
Contact Resistance: 35mΩ/Max
Operation Temperature: -55°C ~ +105°C



Termination Cover
(1 Places)



Wire Holder
(2 Places)

RoHS Compliant

TOLERANCES ARE

MORETHANALL
PCB CONNECTORS
Cable ASSEMBLIES

煜倫股份有限公司

www.morethanall.com

DRAWING BY CY

CHECKED BY GENIUS

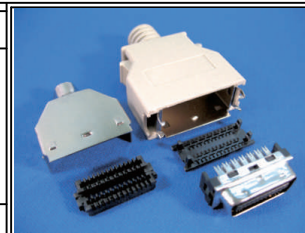
UNIT/mm SCALE 1:1

DATE

SIZE A4

X. ±
.X ±
.XX ±
.XXX ±
ANG ±

PJECTION



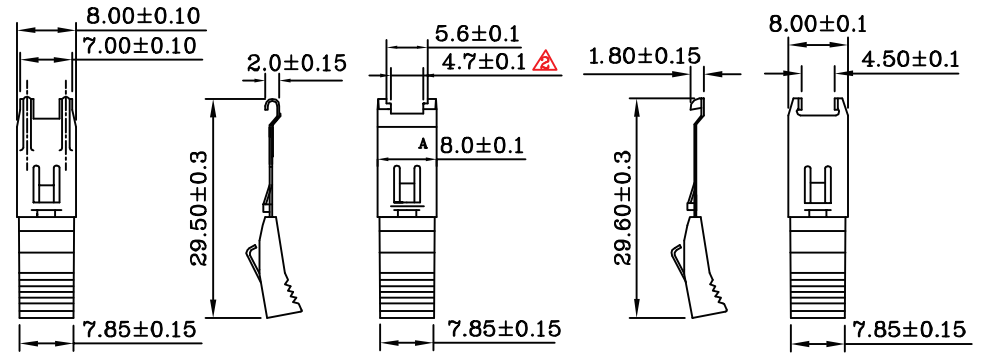
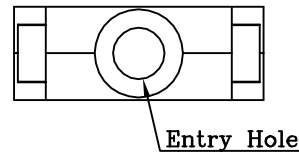
ORDER INFORMATION

HPC-PFQ-026-LF
SERIES | LEADFREE
| 26 WAY
| Q TYPE COVER
| IDC
| MALE

DESCRIPTION: 1.27mm (.050") Ribbon 26Pos
Cable Plug Connector I.D.C Assembly Type

• **MATERIALS:(RoHS Compliant)**

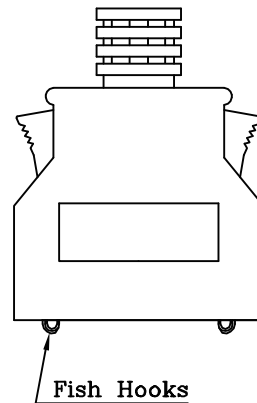
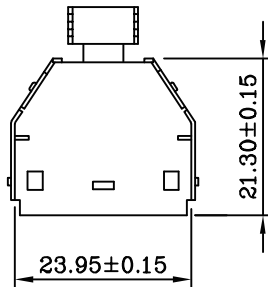
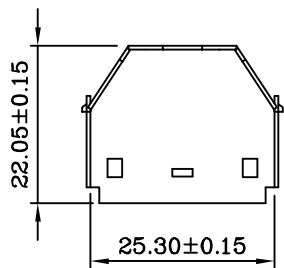
Hood: Plastic Thermoplastic ABS UL 94V-0
 Latch Cover: Plastic Thermoplastic ABS UL 94V-0
 Latch: Stainless Steel
 Inner Shell: Steel Nickel Plated Over Copper



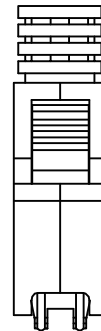
LS: Fish Hooks

LS1: Fish Hooks

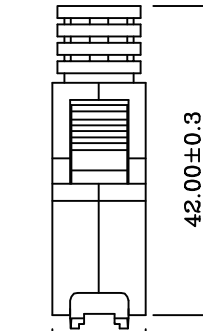
SS: Flag Hooks



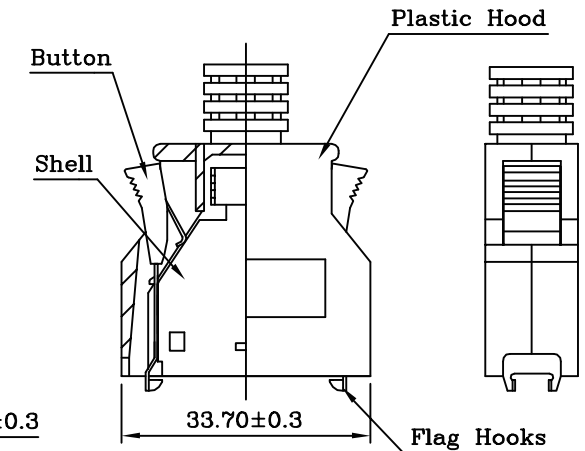
Fish Hooks



LS



LS1



Flag Hooks

MORETHANALL
 PCB CONNECTORS
 Cable ASSEMBLIES

煜倫股份有限公司

www.morethanall.com

RoHS Compliant

DRAWING BY CY

CHECKED BY GENIUS

UNIT/mm SCALE 1:1

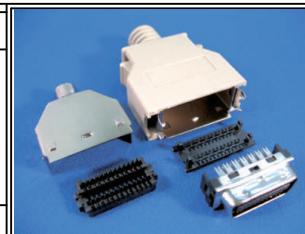
DATE

SIZE A4

TOLERANCES ARE

X. ±
 .X ±
 .XX ±
 .XXX ±
 ANG ±

PJECTION



ORDER INFORMATION

HPC-PFQ-026-LF
 SERIES | LEADFREE
 | 26 WAY
 | Q TYPE COVER
 | IDC
 | MALE

DESCRIPTION: 1.27mm(.050") Series
 26Pos Plastic Hood With Spring Latches