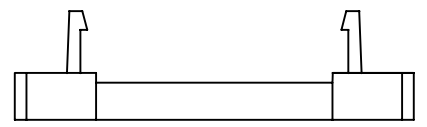
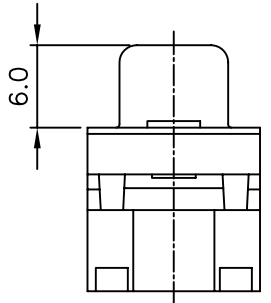
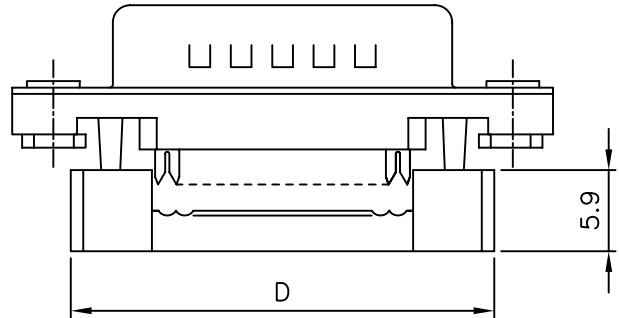


SPECIFICATION
MATERIAL
 Insulator: Polyester resin and glass fiber reinforced (UL94V-0)
 Contacts: Brass
CONTACT PLATING
 Contact area: Gold flash
 Solder tails: 100u" Tin over 40u" Nickel
ELECTRICAL
 Operation voltage: 250 VAC max.
 Current rating: 3 Amps max.
 Contact resistance: 15 mohms max.
 Insulation resistance: 3000 Mohms min @ 500 VDC
 Dielectric withstanding voltage: 1000 VAC / minute
 Operating temperature: -55°C TO +105°C

POSITION	A	B	C	D
DFM-PN-09	16.92	25.00	30.8	22.4
DFM-PN-15	25.25	33.30	39.2	30.8
DFM-PN-25	38.96	47.10	53.1	44.5
DFM-PN-37	55.42	63.50	69.4	61.4



DFM-PN-xx-LF
 T
 LEADFREE

RoHS Compliant



PART NO. DFM-PN-xx		CHECKED BY CY		TOLERANCES ARE		DESCRIPTION: D-SUB IDC FOR FLAT RIBBON CABLE	
DWG NO. DFM-PN-xx		DRAWING BY		.X ± 0.3 .XX ± 0.2 .XXX AWG		AREA	
FILE NO.		PROJECTION				REVISIONS	
UNIT / mm		SCALE 1:1		DATE		HK	

焯倫股份有限公司