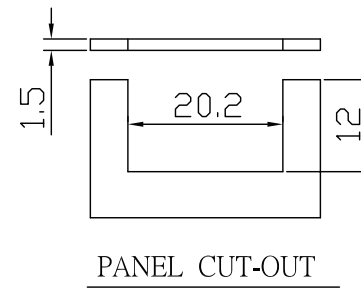
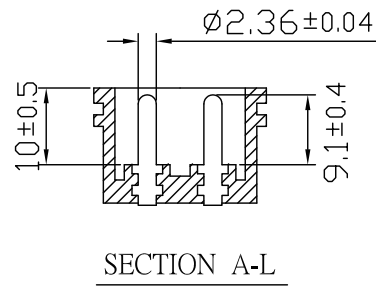
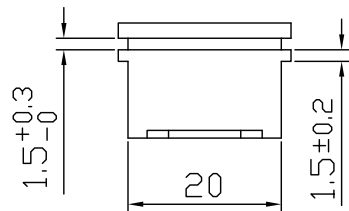


Current Rating: 2.5A/10A(UL) / 2.5A(VDE)
 Voltage Rating: 250V(UL) / 250V(VDE)
 Soldering: Brass, Matte-Tin Plated
 Contact: Brass, Nickel Plated
 Body Insulator: PA66



MORETHANALL
 PCB CONNECTORS
 Cable ASSEMBLIES

煜倫股份有限公司

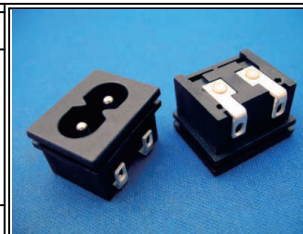
www.morethanall.com

RoHS Compliant

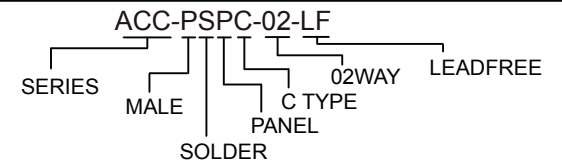
DRAWING BY CY
 CHECKED BY GENIUS
 UNIT/mm SCALE 1:1
 DATE
 SIZE A4 PROJECTION

TOLERANCES ARE

X. ±
 .X ±
 .XX ±
 .XXX ±
 ANG ±



ORDER INFORMATION



DESCRIPTION: