

MATERIAL:

- HOUSING—DSM STANYL TE250F6 (NYLON-46)
HEAT DEFLECTION TEMP.290°
BLACK COLOR, UL94V-0
- CONTACTS—0.35mm THICK PHOS-BRONZE
PLATED WITH HARD GOLD AND
GOLD FLASH IN SOLDER AREA.
- HOLD DOWN—0.30mm THICK COPPER ALLOY,
PLATED WITH TIN.

CAVITY CONFIRMS TO FCC RULES AND REGULATIONS
PART 68,SUBPART F.

- SOLDERING TEMPERATURE 260°C±5°C, 5 SEC.

MJW11-KX06R-0808-LF
LEADFREE

RoHS Compliant

PCB LAYOUT

Ref.



PART NO. MJW11-KX06R-0808

DWG NO. MJW11-KX06R-0808

FILE NO.

UNIT / mm

SCALE 1:1

CHECKED BY CY

DRAWING BY

PROJECTION

TOLERANCES ARE

.X±0.2
.XX±
.XXX±
AWG

DESCRIPTION:

10POSITION, SMT TYPE
SIDE ENTRY PCB JACK

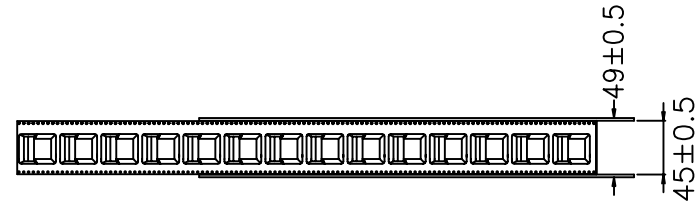
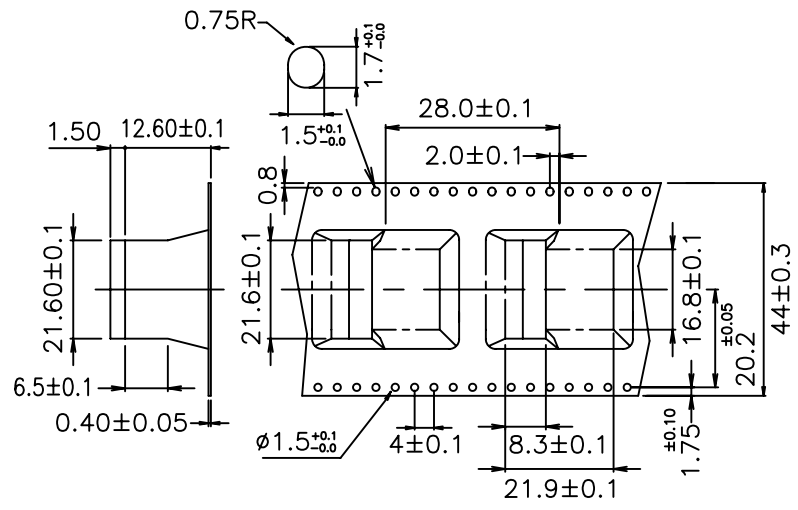
AREA

REVISIONS

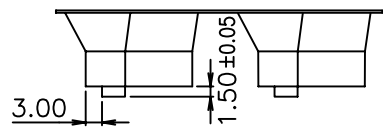
HK

DATE

焜倫股份有限公司



MATERIALS:
 · REEL-2mm THICK PLASTIC WHEEL.
 · CARRIER-PS (0.40mm THICK TAPE).
 · COVER TAPE -PE (MIN0.045~0.12mm THICK TAPE).



COVER TAPE
 零件: 361-033

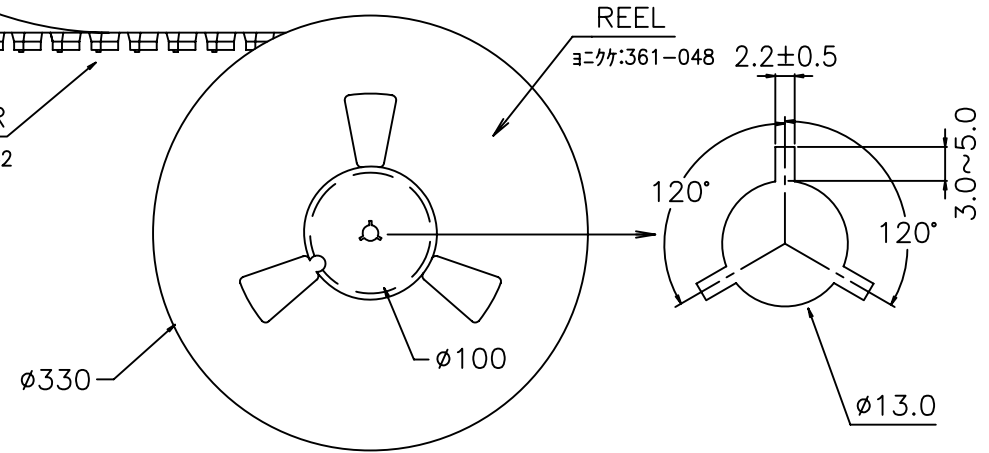
CARRIER
 零件: 361-042

REEL
 零件: 361-048

外箱料號: 361-052(X1) NO MARK
 外箱料號: 361-173(X1) +TYCO LOGO
 支撐架料號: 361-058(X4)
 軸外保護帶料號: 361-319

NOTES:

- A. THE DIRECTION OF JACKS PUT INTO CARRIER.
- B. 10 EMPTY CAVITIES FOR BOTH OF TOP AND BOTTOM OF THE CARRIER.
- C. 180 PCS PRODUCTS BE PACKAGED ONE REEL.
- D. CARTON SIZE: 345(L)X345(W)X315(H)
 6 REEL/CARTON
 TOTAL: 1080 PCS



PART NO. MJW11-KX06R-0808

DWG NO. MJW11-KX06R-0808

FILE NO.

CHECKED BY CY

DRAWING BY

TOLERANCES ARE
 .X ± 0.2
 .XX ±
 .XXX ±
 AWG

DESCRIPTION:

TAPE & REEL
 PACKAGING SPEC.

煜倫股份有限公司

UNIT / mm

SCALE 1:1

PROJECTION

AREA

REVISIONS

HK

DATE