



### Material

- Item a Clamp: Brass(CuZn) Ni plated
- Item b Terminal screw: Steel Zinc plating "-" slot type
- Item c Female contact: PhBz, Tin plated
- Item d Terminal (housing): Thermoplastic (UL94V-0)
- Item e Terminal (cover): Thermoplastic (UL94V-0)

### △ △ Electrical cULus/VDE

- Voltage rating: 300VAC/125VAC
- Current rating: 10A/10.5A
- Wire range: 1.5mm<sup>2</sup>
- Solid wire(AWG): 16-26/16-26
- Stranded wire(AWG): 16-26/16-26
- Torque: 3Lb-In/0.2Nm
- Screw: M2
- Wire strip length: 6-7mm
- Withstanding Voltage: 1.6KV/2.5KV
- Operating temperature: -40°C to +115°C
- Safety Approval:  

N = Number of poles

Dim A = N x 3.81

Dim B = (N-1) x 3.81

	Dim A	Dim B
2-6p	±0.15	±0.15
7-12p	±0.20	±0.20
13-18p	±0.25	±0.25
19-24p	±0.30	±0.30

RoHS Compliant

TOLERANCES ARE

**MORETHANALL**  
PCB CONNECTORS  
Cable ASSEMBLIES

煜倫股份有限公司

www.morethanall.com

DRAWING BY CY

CHECKED BY GENIUS

UNIT / mm

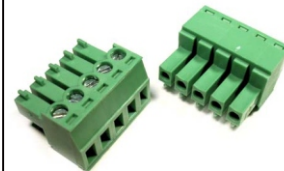
SCALE 1 : 1

DATE

SIZE A4

PJECTION 

X. ±  
.X ±  
.XX ±  
.XXX ±  
ANG ±



### ORDER INFORMATION

TBH038-SWC-xx-LF

SERIES | | LEADFREE  
| | 02-24WAY  
| | CAGE  
| | SCREW 90°  
FEMALE

DESCRIPTION: