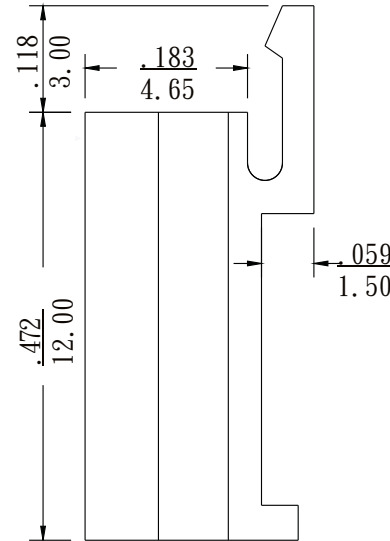
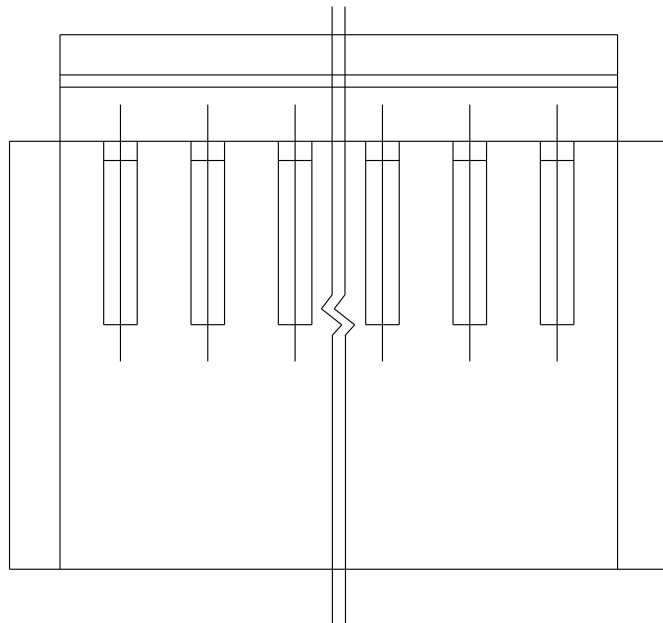
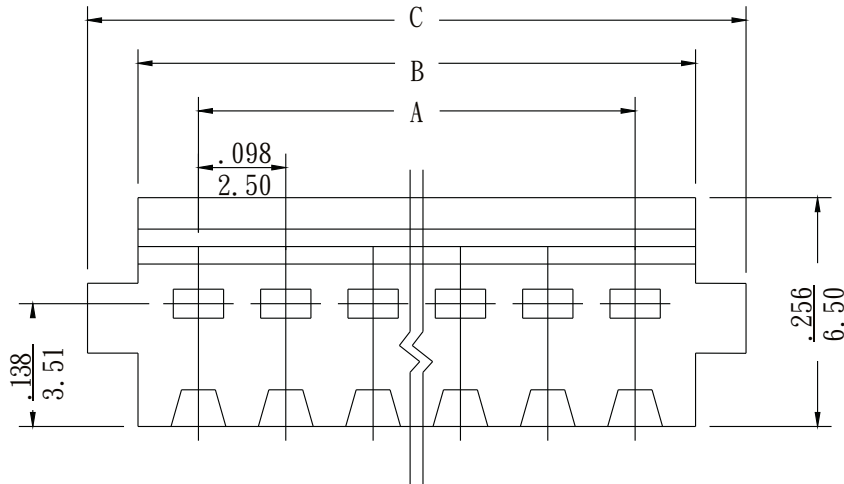


NH Series Crimp Terminal Housings

- * Material : Nylon UL 94V-0
- * Current rating : 1A, AC/DC
- * Voltage rating : 125V, AC/DC
- * Color : White
- * 2-25 circuits available



Dimensional information -inch/mm

Circuits	Dim. A		Dim. B		Dim. C	
2	0.098	2.50	0.235	5.96	0.348	8.85
3	0.197	5.00	0.333	8.46	0.447	11.35
4	0.295	7.50	0.431	10.96	0.545	13.85
5	0.394	10.00	0.530	13.46	0.644	16.35
6	0.492	12.50	0.628	15.96	0.742	18.85
7	0.591	15.00	0.727	18.46	0.841	21.35
8	0.689	17.50	0.825	20.96	0.939	23.85
9	0.787	20.00	0.924	23.46	1.037	26.35
10	0.886	22.50	1.022	25.96	1.136	28.85
11	0.984	25.00	1.120	28.46	1.234	31.35
12	1.083	27.50	1.219	30.96	1.333	33.85
13	1.181	30.00	1.317	33.46	1.431	36.35

Circuits	Dim. A		Dim. B		Dim. C	
14	1.280	32.50	1.416	35.96	1.530	38.85
15	1.378	35.00	1.514	38.46	1.628	41.35
16	1.476	37.50	1.613	40.96	1.726	43.85
17	1.575	40.00	1.711	43.46	1.825	46.35
18	1.673	42.50	1.809	45.96	1.923	48.85
19	1.772	45.00	1.908	48.46	2.022	51.35
20	1.870	47.50	2.006	50.96	2.120	53.85
21	1.969	50.00	2.105	53.46	2.219	56.35
22	2.067	52.50	2.203	55.96	2.317	58.85
23	2.165	55.00	2.302	58.46	2.415	61.35
24	2.264	57.50	2.400	60.96	2.514	63.85
25	2.362	60.00	2.498	63.46	2.612	66.35

RoHS Compliant

TOLERANCES ARE

MORETHANALL
PCB CONNECTORS
Cable ASSEMBLIES

煜倫股份有限公司

www.morethanall.com

DRAWING BY CY

CHECKED BY GENIUS

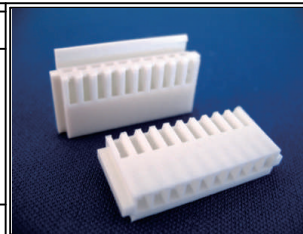
UNIT/mm SCALE 1:1

DATE

SIZE A4

PPOJECTION

X. ±
.X ±
.XX ±
.XXX ±
ANG ±



ORDER INFORMATION

NH-H-xx-LF
SERIES | LEADFREE
| 02~25WAY
HOUSING

DESCRIPTION: .098" (2.5mm) Crimp Terminal Housing