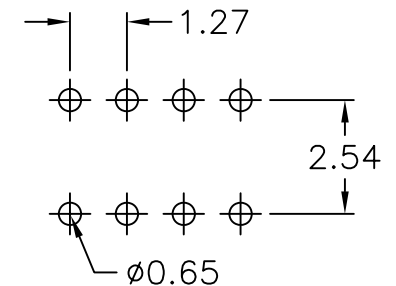


Recommended P.C.Board  
 Hole Layout



### Specifications

Current Rating: 1Amp  
 Insulation Resistance: 1000M $\Omega$  Min.  
 Dielectric Withstanding: 300V AC/DC  
 Contact Resistance: 20m $\Omega$  Max.  
 Operating Temperature: -40°C to +105°C

### Materials

Contact Material: Phosphor Bronze  
 Insulation Material: Polyester, UL 94V-0  
 Nylon-6T  
 All materials must be GP materials

RoHS Compliant

TOLERANCES ARE

**MORETHANALL**  
 PCB CONNECTORS  
 Cable ASSEMBLIES

DRAWING BY CY

X,  $\pm$   
 .X  $\pm 0.38$

CHECKED BY GENIUS

.XX  $\pm 0.25$

UNIT / mm

SCALE 1 : 1

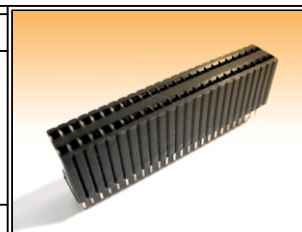
.XXX  $\pm 0.13$

DATE

ANG  $\pm$

SIZE A4

PPOJECTION



### ORDER INFORMATION

Y-D85-2Xxx-LF  
 SERIES | LEADFREE  
 2X02:04WAY  
 2X50:100WAY  
 HIGH 8.5mm  
 DIP 180°

煜倫股份有限公司

www.morethanall.com

DESCRIPTION: 1.27X2.54 FEMALE DUAL ROWS DIP TYPE BASE 8.5