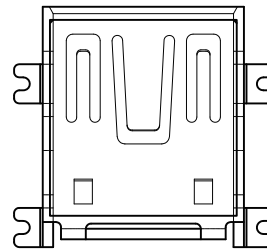
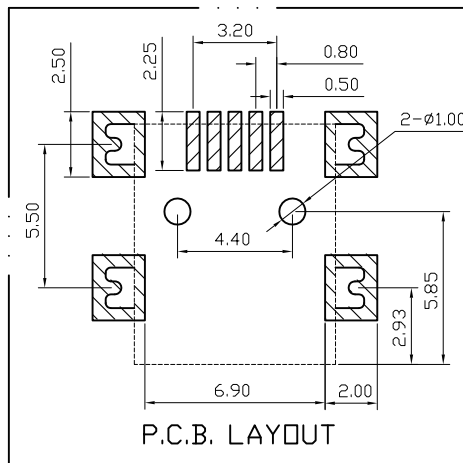
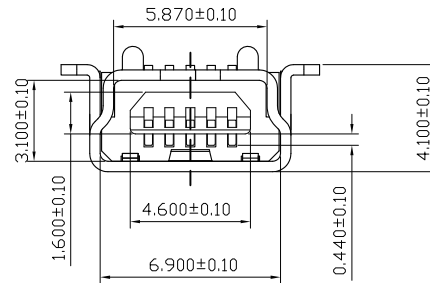
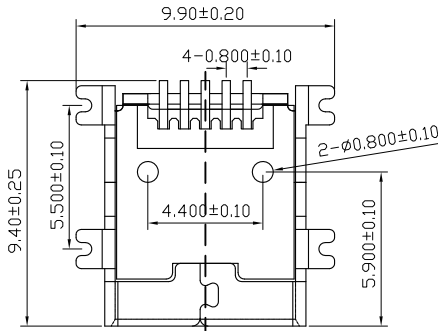
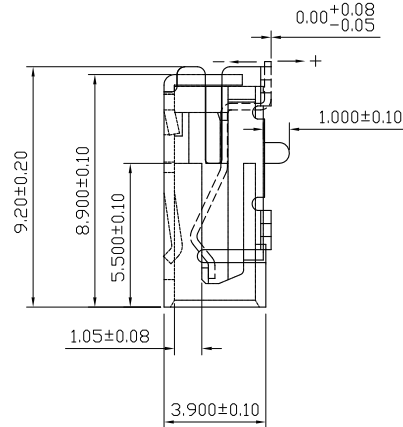
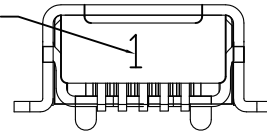


"1"表示鐵殼為 K7料



Note:

1.Material:

- 1.1 Insulator: LCP UL 94-V0 rated.
- 1.2 Contact: Phosphor bronze, t=0.25mm.
- 1.3 Shell: K7, t=0.4mm.

2.Specification:

- 2.1 Current rating: 1A MAX.
- 2.2 Dielectric withstanding voltage: 500 v(ac) far minuta.
- 2.3 Contact resistance: 30 mΩ max.
- 2.4 Insulation resistance: 1000 MΩ min at DC 500V.
- 2.5 Total mating force: 3.57 kgf max.
- 2.6 Total unmating force: 0.71 kgf min.
- 2.7 Temperature range: -55°C~+105°C.

3.Finishes:

- 3.1 Contacts: a:半金霧錫, 鍍底50-80u", 霧錫100-120u", 金 1u".3u".5u".10u".15u".30u".  
b:半金錫, 鍍底50-80u", 錫100-120u", 金 .1u".3u".5u".10u".15u".30u"
- 3.2 Shell: 先打銅底50-80u", 再鍍鍍80-120u".

3	SHELL	1	K7	T=0.40±0.02mm	Nickel Plated	D3660XX-F
2	CONTACT	5	Phosphor Bronze	T=0.25±0.02mm	Gold Flashed	A3650XX
1	HOUSING	1	LCP		Black	JCH0002
No.	Part Name	Q'ty	Material	Thickness	Finish	Notes

RoHS Compliant

TOLERANCES ARE

**MORETHANALL**  
PCB CONNECTORS  
Cable ASSEMBLIES

煜倫股份有限公司

www.morethanall.com

DRAWING BY CY

CHECKED BY GENIUS

UNIT/ mm SCALE 1:1

DATE

SIZE A4

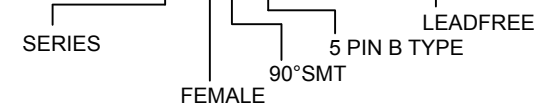
X, ±  
.X ±  
.XX ±  
.XXX ±  
ANG ±

PJECTION



ORDER INFORMATION

MSB-SW-5B-LF



DESCRIPTION: MINI-U.S.B 5P B FEMALE S.M.T