

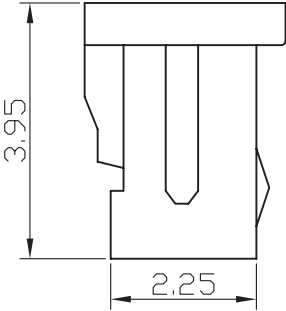
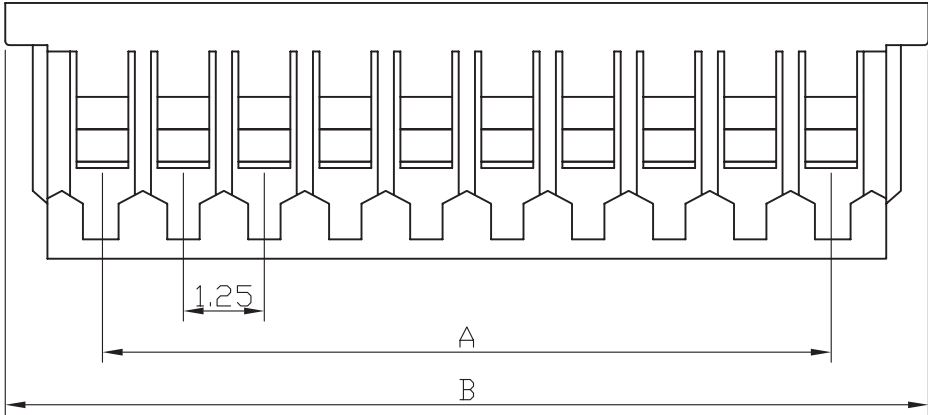
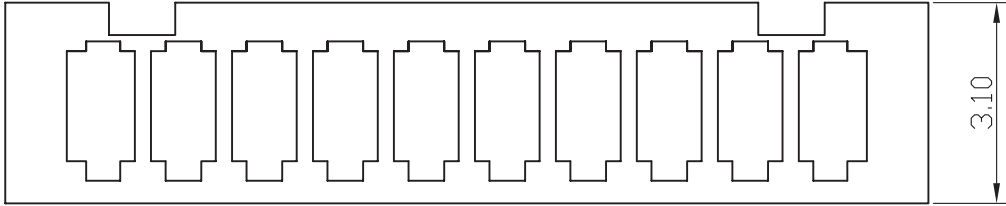
# SPECIFICATIONS

## Electrical

- Current Rating: 1A AC, DC
- Voltage Rating: 125V AC/ max.
- Operating Temp.: -40°C ~ +85°C
- Insulation Resistance: 100MΩ/ min.
- Dielectric Withstanding Voltage: 250V AC/ min.
- Contact Resistance: 20MΩ/ max.

## Material

Material: Nylon66, UL94V-0



Poles	Dimension mm	
	A	B
2	1.25	4.25
3	2.50	5.50
4	3.75	6.75
5	5.00	8.00
6	6.25	9.25
7	7.50	10.50
8	8.75	11.75
9	10.00	13.00
10	11.25	14.25
11	12.50	15.50
12	13.75	16.75
13	15.00	18.00
14	16.25	19.25
15	17.50	20.50

RoHS Compliant

TOLERANCES ARE

**MORETHANALL**  
PCB CONNECTORS  
Cable ASSEMBLIES

煜倫股份有限公司

www.morethanall.com

DRAWING BY CY

CHECKED BY GENIUS

UNIT/ mm

SCALE 1:1

DATE

SIZE A4

X. ±

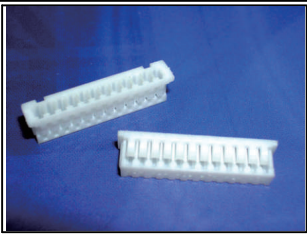
.X ±

.XX ±

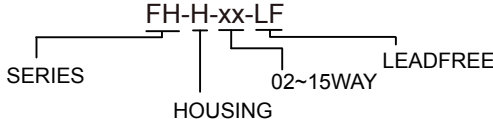
.XXX ±

ANG ±

P PROJECTION



### ORDER INFORMATION



DESCRIPTION: 1.25mm Wire-to-Board Housing