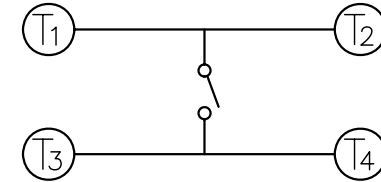
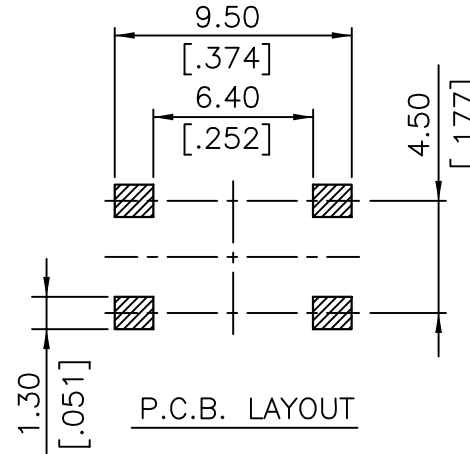
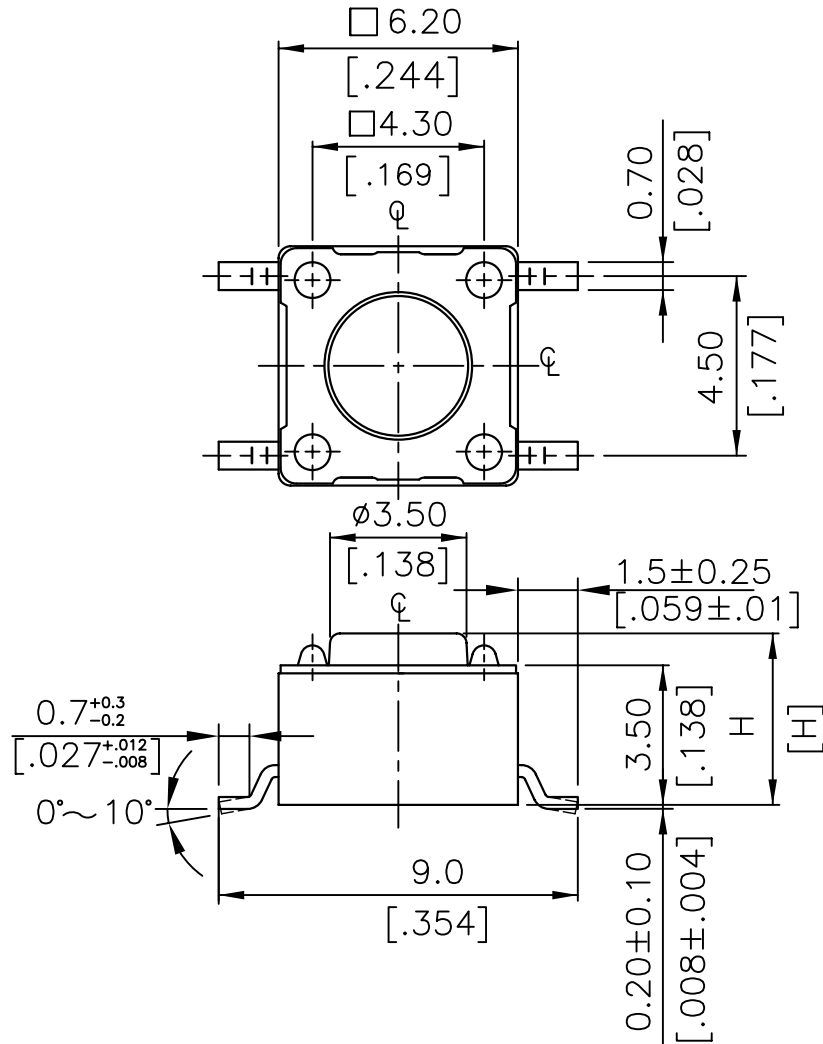


NOTE:

1. ALL DIMENSIONS ARE IN MILLIMETERS, BRACKETED DIMENSIONS ARE IN INCHES.
2. GENERAL TOLERANCES MAX.±0.20mm.



CIRCUIT DIAGRAM

TSW66-V130-xxx	13.0 [0.512]
TSW66-V095-xxx	9.5 [0.374]
TSW66-V070-xxx	7.0 [0.275]
TSW66-V050-xxx	5.0 [0.197]
TSW66-V043-xxx	4.3 [0.169]
PROD.	NO. H

RoHS Compliant

TOLERANCES ARE

MORETHANALL
PCB CONNECTORS
Cable ASSEMBLIES

煜倫股份有限公司

www.morethanall.com

DRAWING BY CY

CHECKED BY GENIUS

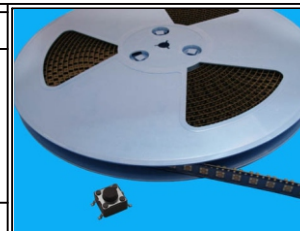
UNIT / mm SCALE 1:1

DATE

SIZE A4

PJECTION

X.±
.X±
.XX±
.XXX±
ANG±

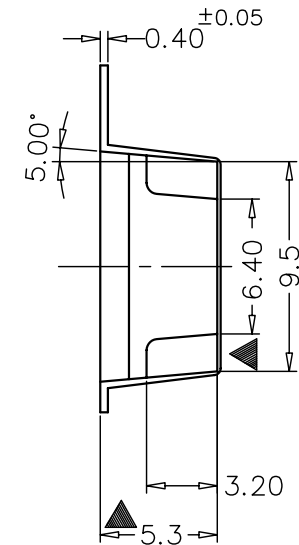
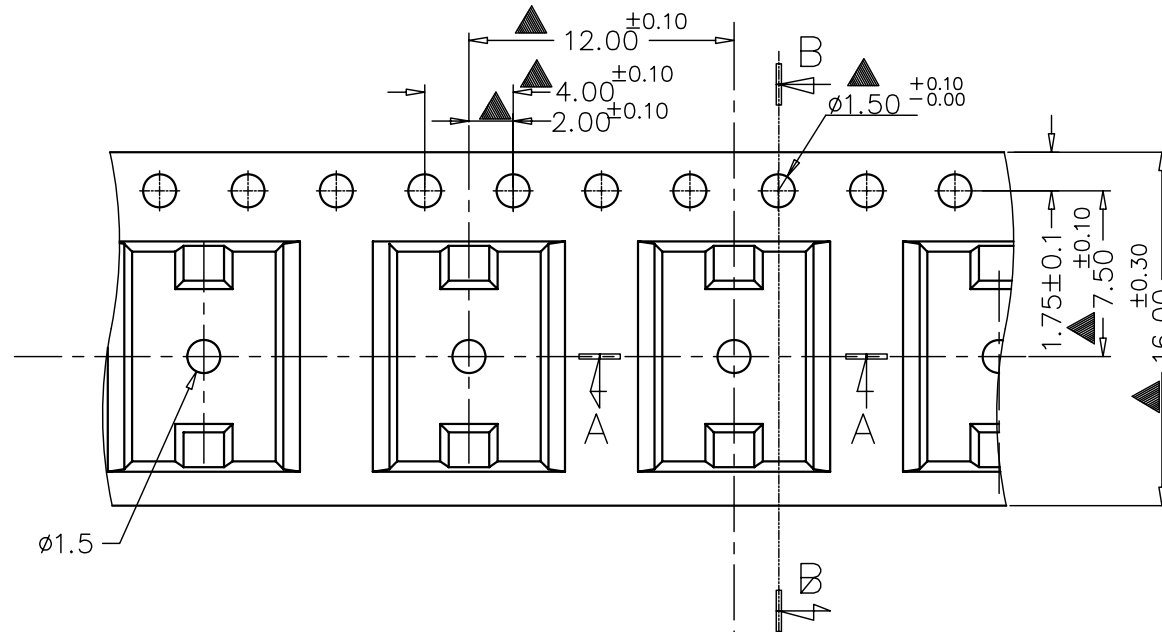


ORDER INFORMATION

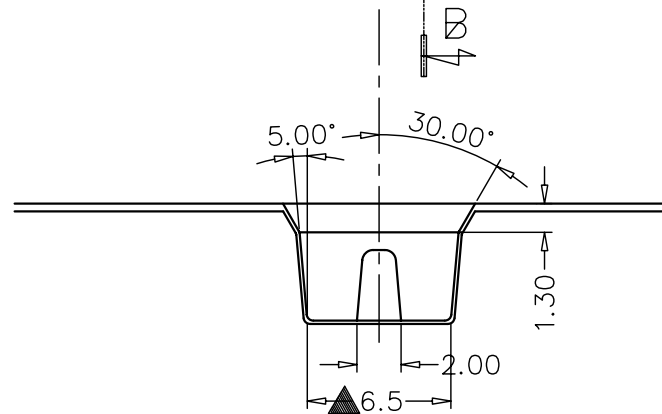
TSW66-VxxxR-xxx-LF

SERIES 180°SMT REEL LEADFREE
 043:4.3mmHIGH
 050:5.0mmHIGH
 095:9.5mmHIGH
 130:13.0mmHIGH
 100:100g (BLACK)
 160:160g (BROWN)
 260:260g (RED)
 320:320g (SALMON)
 520:520g (YELLOW)

DESCRIPTION: TACTILE SWITCH SMT TYPE

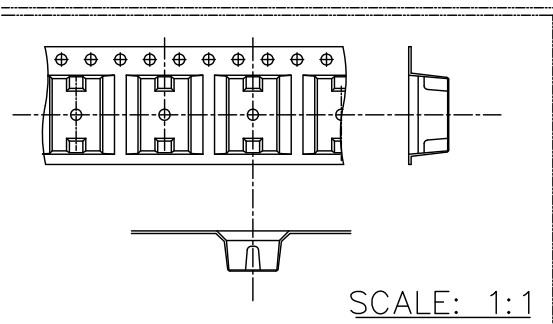


B-B Section



A-A Section

NOTE:
 1. GENERAL TOLERANCE: ± 0.10 mm.
 2. PITCH TOLERANCE OVER ANY 10: ± 0.2 mm.



RoHS Compliant

TOLERANCES ARE

MORETHANALL
 PCB CONNECTORS
 Cable ASSEMBLIES

DRAWING BY CY

X. \pm

CHECKED BY GENIUS

.X \pm

UNIT / mm

SCALE 1:1

.XXX \pm

DATE

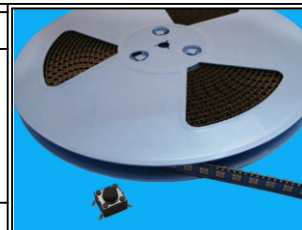
ANG \pm

煜倫股份有限公司

www.morethanall.com

SIZE A4

PJECTION



ORDER INFORMATION

TSW66-VxxxR-xxx-LF

SERIES	180°SMT	REEL	100:100g (BLACK)	LEADFREE
	043:4.3mmHIGH		160:160g (BROWN)	
	050:5.0mmHIGH		260:260g (RED)	
	095:9.5mmHIGH		320:320g (SALMON)	
	130:13.0mmHIGH		520:520g (YELLOW)	

DESCRIPTION: