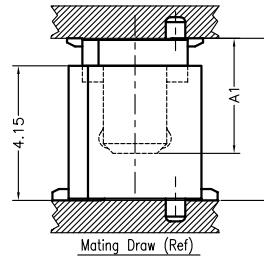
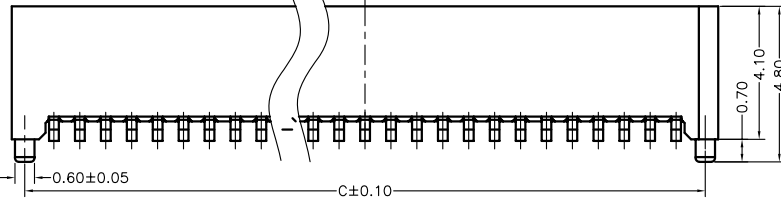


Specifications

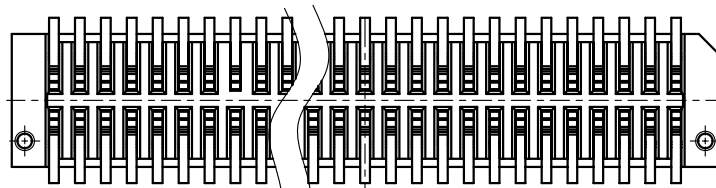
Current Rating:0.5A AC/DC
 Voltage Rating:100V AC/DC
 Contact Resistance:40m ohm. Max
 Insulation Resistance:100Mohm min
 Withstanding Voltage:500V(r.m.s) For one Minute
 Operating Temperature Range:-40°C to 105°C
 Materials:

Insulator:High Temp. Plastic(Nylon 46 UL94V-0)
 Color:White
 Conact :Phosphor Bronze
 Plated:Gold Plated



NP0820-PV415P-xxx-LF
 LEADFREE

RoHS Compliant

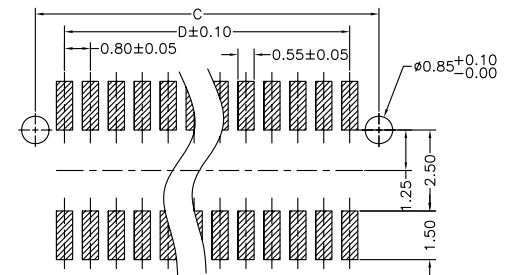


Contacts Dimensions :

Number of Position	A	B	C	D	Number of Position	A	B	C	D
10	5.80	4.90	5.00	3.20	34	15.40	14.50	14.60	12.80
12	6.60	5.70	5.80	4.00	36	16.20	15.30	15.40	13.60
14	7.40	6.50	6.60	4.80	38	17.00	16.10	16.20	14.40
16	8.20	7.30	7.40	5.60	40	17.80	16.90	17.00	15.20
18	9.00	8.10	8.20	6.40	50	21.80	20.90	21.00	19.20
20	9.80	8.90	9.00	7.20	60	25.80	24.90	25.00	23.20
22	10.60	9.70	9.80	8.00	68	29.00	28.10	28.20	26.40
24	11.40	10.50	10.60	8.80	70	29.80	28.90	29.00	27.20
26	12.20	11.30	11.40	9.60	80	33.80	32.90	33.00	31.20
28	13.00	12.10	12.20	10.40	90	37.80	36.90	37.00	35.20
30	13.80	12.90	13.00	11.20	100	41.80	40.90	41.00	39.20
32	14.60	13.70	13.80	12.00					

**Mating Height Dimension

P/N(Plug)	P/N(Socket)	Socket Height Dim A1	Mating Height Dim H
NP0820-PV415P-xxx	NP0820-SV085P-xxx	3.55	5.00
NP0820-PV415P-xxx	NP0820-SV135P-xxx	4.05	5.50



PCB Layout



PART NO. NP0820-PV415P-xxx

DWG NO. NP0820-PV415P-xxx

FILE NO.

UNIT / mm

SCALE 1:1

CHECKED BY CY

DRAWING BY

PROJECTION

TOLERANCES ARE

.X ± 0.2
 .XX ± 0.1
 .XXX ±
 AWG

DESCRIPTION: 0.8mm Board To Board Plug 4.15mm Height

AREA

REVISIONS

HK

DATE

煜倫股份有限公司