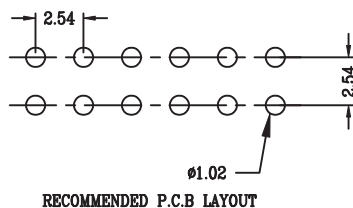
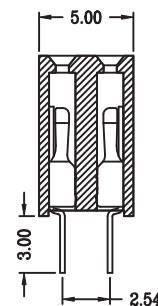
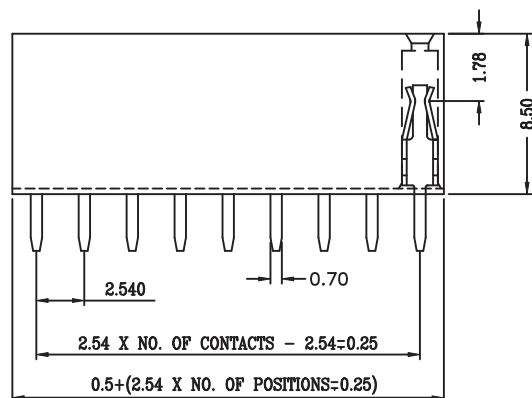
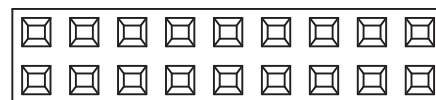


Contacts	Dim_A
2X2P	5.08
2X3P	7.62
2X4P	10.66
2X5P	13.2
2X6P	15.74
2X7P	18.28
2X8P	20.82
2X9P	23.36
2X10P	25.9
2X11P	28.44
2X12P	30.98
2X13P	33.52
2X14P	36.06
2X15P	38.6
2X16P	41.14
2X17P	43.68
2X18P	46.22
2X19P	48.76
2X20P	51.3
2X21P	53.84
2X22P	56.38
2X23P	58.92
2X24P	61.46
2X25P	64.0
2X26P	66.54
2X27P	69.08
2X28P	71.62
2X29P	74.16
2X30P	76.7
2X31P	79.24
2X32P	81.78
2X33P	84.32
2X34P	86.86
2X35P	89.4
2X36P	91.94
2X37P	94.48
2X38P	97.02
2X39P	99.56
2X40P	102.1



SPECIFICATIONS
 CURRENT RATING: 3 AMP
 INSULATION RESISTANCE: 1000M OHMS MIN.
 DIELECTRIC WITHSTANDING: 600V AC/DC
 CONTACT RESISTANCE: 20m OHMS MAX.
 OPERATING TEMPERATURE: -40°C ~ +105°C

MATERIALS
 CONTACT MATERIAL: PHOSPHOR BRONZE
 INSULATION MATERIAL: POLYESTER, UL 94V-0
 NYLON 6T

RoHS Compliant

TOLERANCES ARE

MORETHANALL
 PCB CONNECTORS
 Cable ASSEMBLIES

DRAWING BY CY

CHECKED BY GENIUS

UNIT/ mm

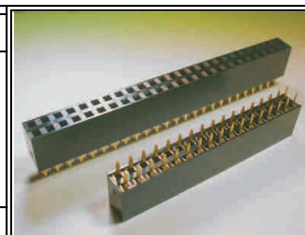
SCALE 1:1

DATE

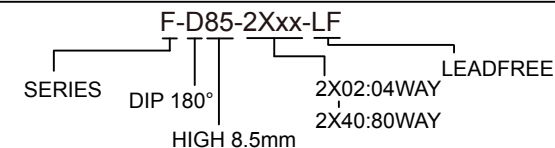
SIZE A4

X. ±
 .X ± 0.35
 .XX ± 0.25
 .XXX ±
 ANG ±

PJECTION



ORDER INFORMATION



煜倫股份有限公司

www.morethanall.com

DESCRIPTION: 2.54mm Female Socket Dual Row DIP type (H=8.5)