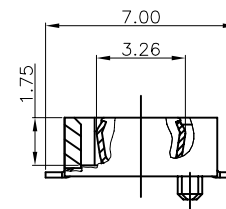
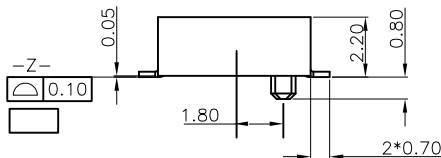
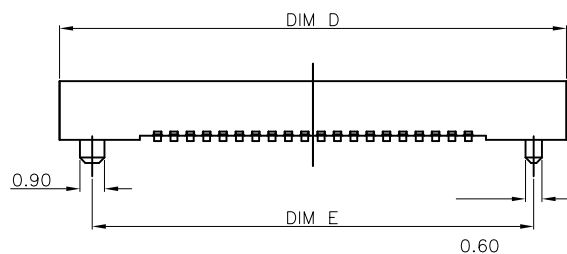
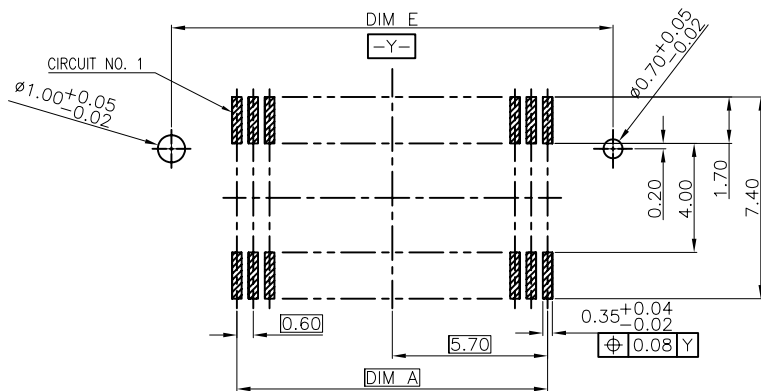


NOTES:

1. MATERIAL:
 - 1.1 HOUSING: THERMOPLASTIC, HIGH TEMP., UL94V-0; COLOR:NATURAL.
 - 1.2 CONTACT: COPPER ALLOY
2. FINISH:
 - 2.1 CONTACT: UNDERPLATING: 50u" MIN. NICKEL OVERALL. FINISH:SEE ORDER INFORMATION.
3. REFLOW SOLDER CAPABLE TO 260°C PER ACES SPEC.
4. SPEC. PLS. REFER TO PS-88373-xxxx
5. DRAWING PACKAGING REFER TO 88373-xxxx
6. COPLANARITY 0.1 MM MAX. BASE ON DATUM A



SECTION A-A



RECOMMENDED PCB LAYOUT
GENERAL TOLERANCE ±0.05

FX8-S21P-xxx-LF
LEADFREE

RoHS Compliant

CKT	DimA	DimB	DimC	DimD	DimE
40	11.4	14.8	17.05	18.6	16.2
60	17.4	20.8	23.05	24.6	22.2
80	23.4	26.8	29.05	30.6	28.2
90	26.4	29.8	32.05	33.6	31.2
100	29.4	32.8	35.05	36.6	34.2
120	35.4	38.8	41.05	42.6	40.2
140	41.4	44.8	47.05	48.6	46.2
160	47.4	50.8	53.05	54.6	52.2

MORETHANALL
CONNECTORS
ASSEMBLIES

PART NO. FX8-S21P-xxx

DWG NO. FX8-S21P-xxx

FILE NO.

UNIT / mm

SCALE 1:1

CHECKED BY CY

DRAWING BY

PROJECTION

TOLERANCES ARE

.X ± 0.2
.XX ± 0.1
.XXX ±
AWG

DESCRIPTION:

0.6mm BTB RCPT
SMT S/T D/R TYPE

AREA

REVISIONS

HK

DATE

煜倫股份有限公司