

SPECIFICATIONS

Current rating : 2A AC,DC

Voltage rating : 250V AC,DC

Temperature range : -25°C to +85 °C

Contact resistance : 20mΩ Max.

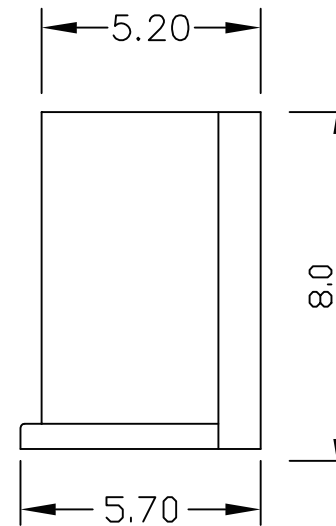
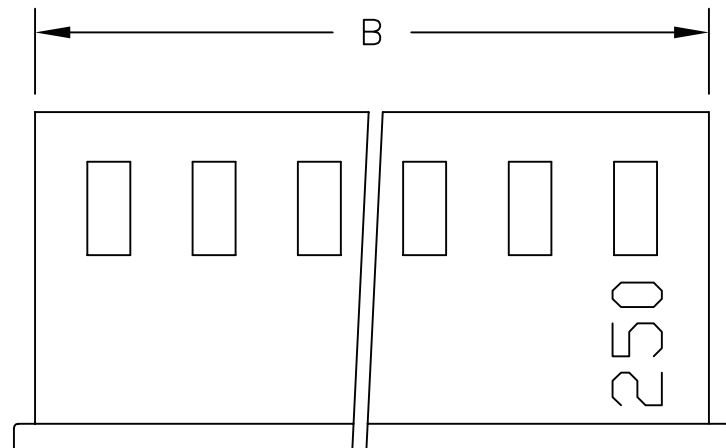
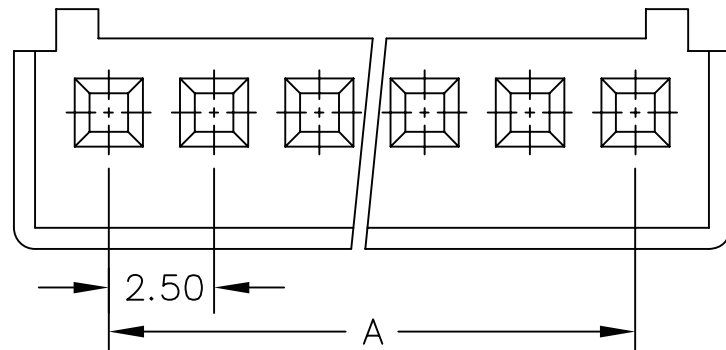
Insulation resistance : 1000MΩ Min.

Withstanding voltage : 800V AC/minute

Material : Nylon 66, UL94V-2

Ordering Information & Dimensions

Poles	Dimension (mm)		Part No.	Note.
	A	B		
2	2.50	6.00	RM-H-02	
3	5.00	8.50	RM-H-03	
4	7.50	11.00	RM-H-04	
5	10.00	13.50	RM-H-05	
6	12.50	16.00	RM-H-06	
7	15.00	18.50	RM-H-07	
8	17.50	21.00	RM-H-08	
9	20.00	23.50	RM-H-09	
10	22.50	26.00	RM-H-10	
11	25.00	28.50	RM-H-11	
12	27.50	31.00	RM-H-12	
13	30.00	33.50	RM-H-13	
14	32.50	36.00	RM-H-14	
15	35.00	38.50	RM-H-15	
16	37.50	41.00	RM-H-16	
17	40.00	43.50	RM-H-17	
18	42.50	46.00	RM-H-18	
19	45.00	48.50	RM-H-19	
20	47.50	51.00	RM-H-20	



RoHS Compliant

TOLERANCES ARE

MORETHANALL
PCB CONNECTORS
Cable ASSEMBLIES

DRAWING BY CY

CHECKED BY GENIUS

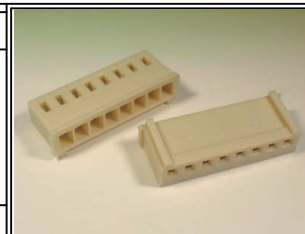
UNIT/mm SCALE 1:1

DATE

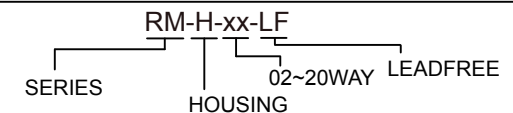
SIZE A4

X. ±
.X ±
.XX ±
.XXX ±
ANG ±

P PROJECTION



ORDER INFORMATION



DESCRIPTION: 2.5mm Wire-to-Board Housing

煜倫股份有限公司

www.morethanall.com