

SPECIFICATION

MATERIAL

Insulator: Thermal Plastic UL94V-0

Contacts: Copper Alloy

Shell: Steel

Rivet, Boardlock: Copper alloy

CONTACT PLATING

Underplate: 50µ" Nickel

Contact Area: 1µ"~30µ" Selective Gold

Solder Tails Area: 100µ" Tin/Lead(Brighten Tin) or

100µ" Tin/Lead Free(Brighten Tin/Matte Tin)

ELECTRICAL

Operation Voltage: 250 VAC Max.

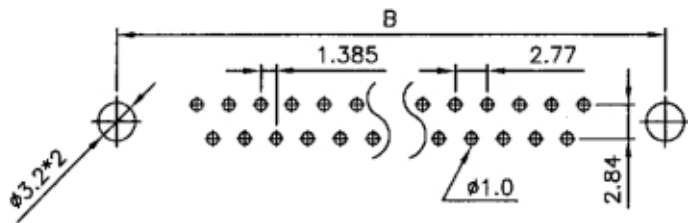
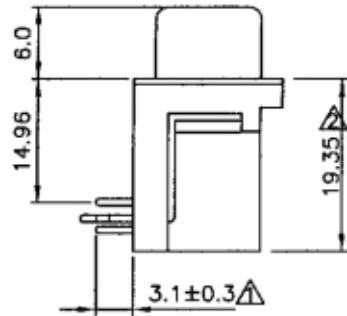
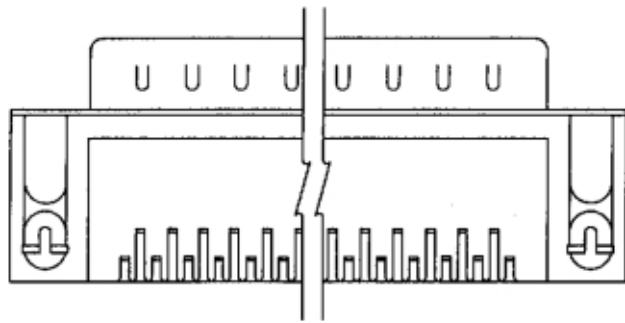
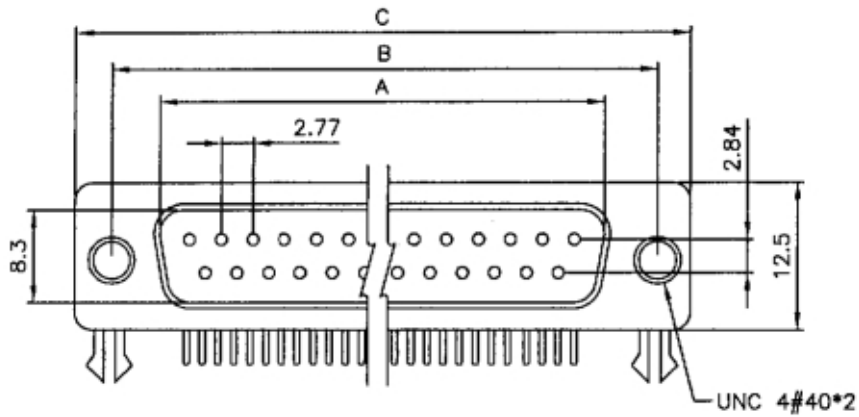
Current Rating: 3 Amps Max.

Contact Resistance: 15 mohms Max.

Insulation Resistance: 3000 Mohms Min @ 500 VDC

Dielectric Withstanding Voltage: 1000 VAC / Minute

Operating Temperature: -55°C TO +105°C



RECOMMENDED P.C.B LAYOUT(TOP VIEW)
 TOLERANCES: ±0.05mm

POSITION	A	B	C
9	16.92	25.00	30.8
15	25.25	33.30	39.2
23	35.90	44.30	50.3
25	38.96	47.10	53.1
37	55.42	63.50	69.4

DRL-PGN-xx-LF
 LEADFREE
 RoHS Compliant

MORETHANALL
 CONNECTORS
 ASSEMBLIES

PART NO. DRL-PGN-xx

DWG NO. DRL-PGN-xx

FILE NO.

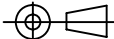
UNIT / mm

SCALE 1:1

CHECKED BY CY

DRAWING BY

PROJECTION



TOLERANCES ARE

.X ± 0.2

.XX ±

.XXX ±

AWG

DESCRIPTION:

AREA

REVISIONS

HK

DATE

焯倫股份有限公司