

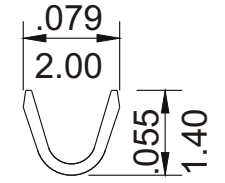
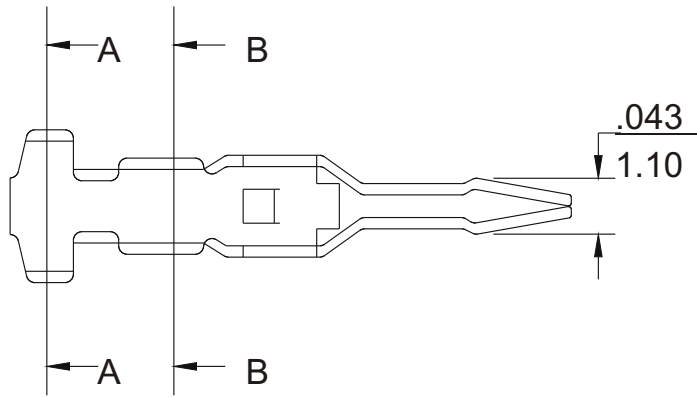
1 2 3 4 5 6 7 8 9 0

J
I
H
G
F
E
D
C
B
A

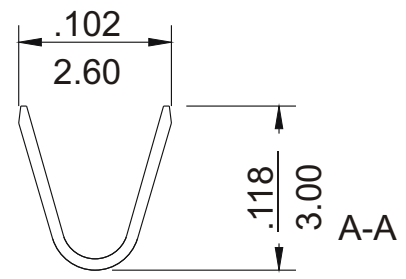
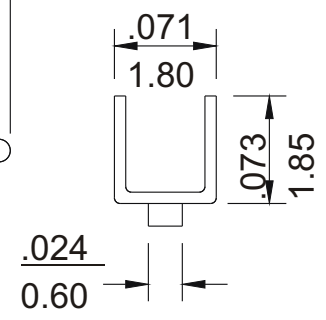
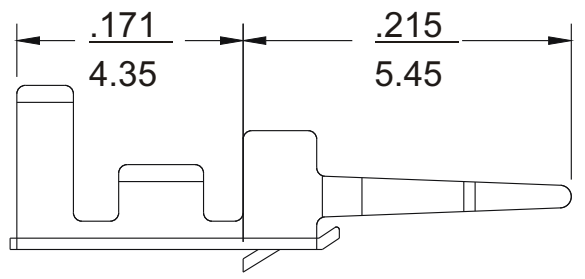
SCN Crimp Terminal

- * Material : Brass or Phosphor bronze
- * Current rating : 2A, AC/DC
- * Voltage rating : 125V, AC/DC
- * Applicable wire AWG #28- #24

inch
mm



B-B



A-A

MORETHANALL
CONNECTORS
ASSEMBLIES

焯倫有限公司

PART NO. SCN-T-24

DWG NO. SCN-T-24

FILE NO.

UNIT / mm

SCALE 1:1

APPROVED BY CY

DRAWING BY

PROJECTION

TOLERANCES ARE

.X
.XX
.XXX
AWG

DESCRIPTION:
AREA

(2.5mm) Board-In Type Connector
REVISIONS
HK
DATE