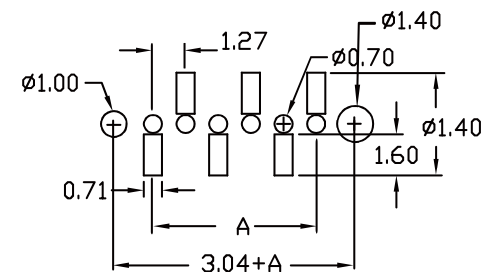
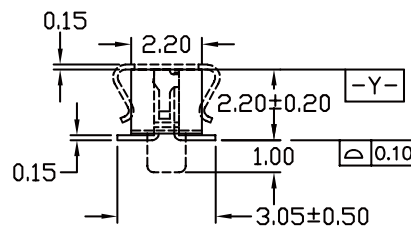
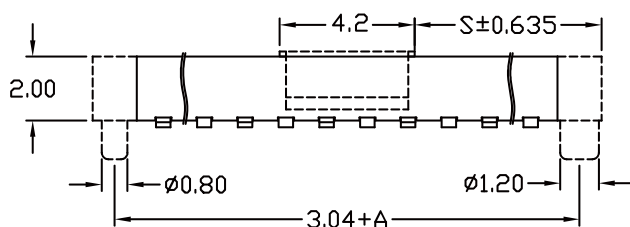
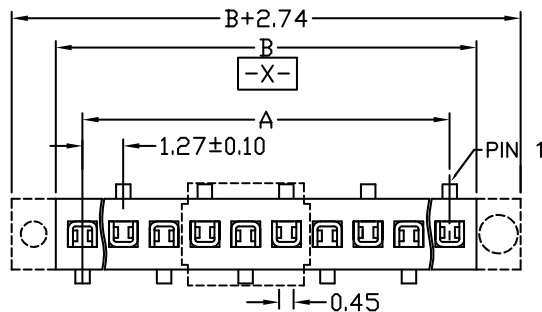


No. of Contacts	DIMENSIONS	
	A	B
3	2.54	4.21
4	3.81	5.48
5	5.08	6.75
6	6.35	8.02
7	7.62	9.29
8	8.89	10.56
9	10.16	11.83
10	11.43	13.10
11	12.70	14.37
12	13.97	15.64
13	15.24	16.91
14	16.51	18.18
15	17.78	19.45
16	19.05	20.72
17	20.32	21.99
18	21.59	23.26
19	22.86	24.53
20	24.13	25.80
21	25.40	27.07
22	26.67	28.34
23	27.94	29.61
24	29.21	30.88
25	30.48	32.15
26	31.75	33.42
27	33.02	34.69
28	34.29	35.96
29	35.56	37.23
30	36.83	38.50
31	38.10	39.77
32	39.37	41.04
33	40.64	42.31
34	41.91	43.58
35	43.18	44.85
36	44.45	46.12
37	45.72	47.39
38	46.99	48.66
39	48.26	49.93
40	49.53	51.20



NOTES: (UNLESS OTHERWISE SPECIFIED)

1. DIMENSION SHALL BE INTERPRETED PER ANSI Y14.5M-1994.
2. CONTACT RETENTION FORCE: 150g MIN, PER CONTACT.
3. INSERTION FORCE: 120g MAX, PER CONTACT.
4. WITHDRAW FORCE: 20g MIN, PER CONTACT.
5. DURABILITY: 50 CYCLES MIN.
6. CURRENT RATING: 1 AMPERE.
7. RATING VOLTAGE: 30V AC/DC.
8. CONTACT RESISTANCE: 20 m ohms MAX, INITIAL.
9. DIELECTRIC WITHSTANDING VOLTAGE: 500V AC rms./MINUTE.
10. INSULATION RESISTANCE: 1000 Megohms MIN.
11. OPERATING TEMPERATURE: $-40^{\circ} \sim +105^{\circ}C$.
12. FINISH:
 - GOLD PLATED
 - ◎ STANDARD: GOLD FLASH
 - ◎ DUPLEX PLATING: GOLD PLATED ON CONTACT AREA, TIN PLATED ON SOLDER AREA
13. HARMFUL MATERIAL SHOULD BE COMPLIANT TO DOC. "EI-0005" STANDARDS.

RoHS Compliant

TOLERANCES ARE

MORETHANALL
PCB CONNECTORS
Cable ASSEMBLIES
煜倫股份有限公司

DRAWING BY CY

X. ± 0.40

CHECKED BY GENIUS

.X ± 0.25

UNIT / mm

SCALE 1 : 1

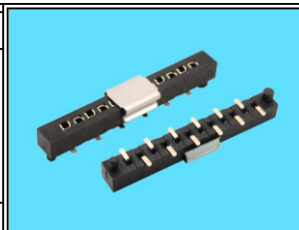
.XXX \pm

DATE

ANG \pm

SIZE A4

P PROJECTION



ORDER INFORMATION

YAX-Z22PC-1XxxL-LF

SERIES | | | | LEADFREE
| | | | L TYPE FOOT POSITION
BOTTOM ENTRY SMT | | | | 1X03:03WAY
HIGH 2.2mm | | | | 1X40:40WAY
POST | CAP

DESCRIPTION:

www.morethanall.com