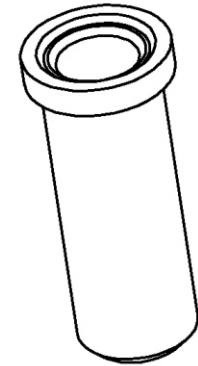


SECTION A-A



**Material**

- Pin (outer sleeve) : Brass,machined,CuZn38pB2
- Clip (contact 4 finger) : BeCu.heat treated
- Plating(Outer sleeve) : Tin plated:2u"/80u"nickel, 5u"/200u"Tin
- Gold plated;2ugm/80u"nickel,Full gold flash  
Plating(contact) : 2u"/80u"nickel,gold or Tin plating
- FOR DIA.  $\phi 0.80$  TO  $\phi 1.20$  mm

**RoHS Compliant**

TOLERANCES ARE

**MORETHANALL**  
PCB CONNECTORS  
Cable ASSEMBLIES

DRAWING BY CY

CHECKED BY GENIUS

UNIT / mm

SCALE 1 : 1

DATE

SIZE A4

P PROJECTION

X.  $\pm$   
.X  $\pm$   
.XX  $\pm$   
.XXX  $\pm$   
ANG  $\pm$



**ORDER INFORMATION**

SS-DXT-1.0-LF  
SERIES | LEADFREE  
DIA 1.0mm  
WITHOUT TAIL  
DIP 180°

**煜倫股份有限公司**

[www.morethanall.com](http://www.morethanall.com)

DESCRIPTION: