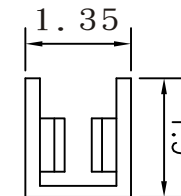
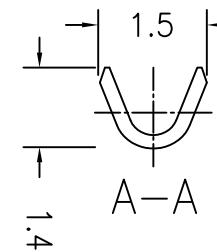
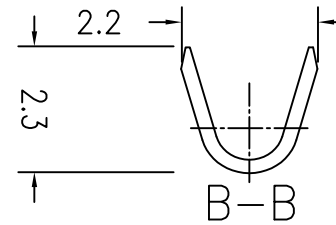
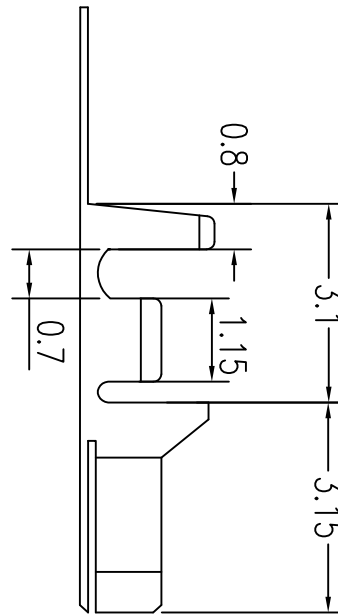
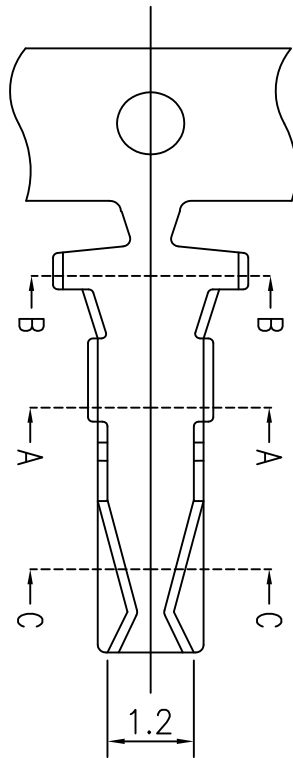


Features:

- * Accepts AWG 26~30 wire range
- Material : Phosphor Bronze
- Finish Tin-plated & Gold-flash
- * Qty /reel :10000 PCS
- * Thickness:0.2
- * Tolerance±0.2mm

Specification :

- | | |
|---------------------|------------|
| Pitch between poles | 2.0mm |
| Rate Voltage | 250V AC,DC |
| Rated Current | 1A. AC,DC |
| * Applicable Wire | AWG#26~#30 |



C-C

RoHS Compliant

TOLERANCES ARE

MORETHANALL
PCB CONNECTORS
Cable ASSEMBLIES

DRAWING BY CY

CHECKED BY GENIUS

UNIT / mm

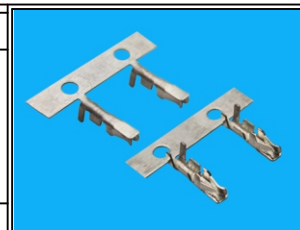
SCALE 1 : 1

DATE

SIZE A4

PPOJECTION

X. ±
.X ±
.XX ±
.XXX ±
ANG ±



ORDER INFORMATION

YH20-T-26-LF
SERIES | T LEADFREE
26~30AWG
TERMINAL

煜倫股份有限公司

www.morethanall.com

DESCRIPTION: