

TECHNICAL CHARACTERISTICS

1. General Characteristics

Dimension: 29.65L x 17.20W x 3.00H mm
 Weight: Approx. 1.43 g
 Contact principle: Friction technology
 Operating position: Shaft up / Down / Horizontal
 Mounting System: SMT Type (post optional)
 Durability: 10,000 cycles min.

2. Mechanical Characteristics

Insulation material: Thermoplastic, UL 94V-0
 RoHS Directive 2002/95/EC Compliant

3. Electrical Characteristics

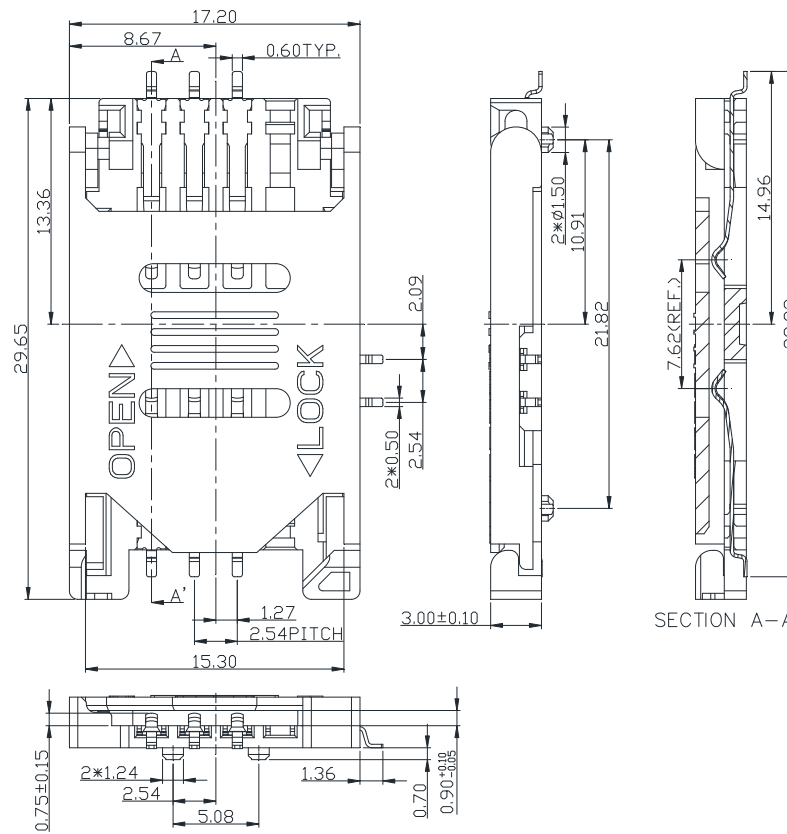
Number of contacts: 6, 8 pins (optional)
 Contact resistance: 50 m typical, 100 m max.
 Insulation resistance: >1000 M / 500 VDC
 Switch Type: Blade
 Operation: Normally Open

4. Solderability

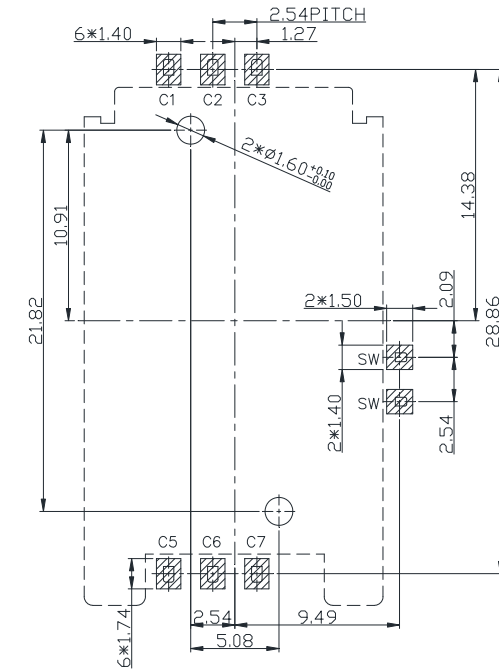
Wave: Not applicable
 IR reflow: 260 C, 10 sec. Max.
 Manual soldering: 360 C, 3 sec. Max.

5. Environmental Characteristics

Operating temperature: - 40 C ~ + 85 C
 Operating humidity: 10 % ~ 95 % RH
 Storage temperature: - 40 C ~ + 85 C
 Storage humidity: 10 % ~ 95 % RH



Unit: mm; Tolerances: 0.15 mm
Mechanical outline dimension



Unit: mm; Tolerances: 0.05 mm
Reference dimension for PCB layout

RoHS Compliant

TOLERANCES ARE

MORETHANALL
 PCB CONNECTORS
 Cable ASSEMBLIES
 煜倫股份有限公司

DRAWING BY CY

X. ±

CHECKED BY GENIUS

.X ±

UNIT / mm

SCALE 1 : 1

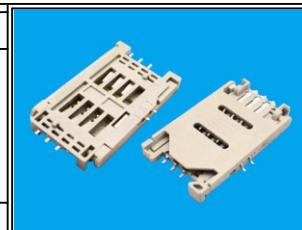
.XXX ±

DATE

ANG ±

SIZE A4

PJECTION



ORDER INFORMATION

SCV-W2830PB-06-LF

SERIES | | | | LEADFREE

90°SMT | | | | 06WAY

PAD TO PAD 28.86mm | | | | OPEN SWITCH

HIGH 3.0mm | | | | WITH LOCATING PEG

DESCRIPTION: