

SPECIFICATIONS

Electrical

Voltage Rating: 100V AC, DC
 Current Rating: 2A AC, DC
 Withstand Voltage: 800V AC/ min
 Insulation Resistance: 1000MΩ/ min
 Temperature Range: -25°C ~ +85°C

Material

Wafer: High Temperature Plastic Nylon 6T UL94V-0
 Pin: High Strength Brass With Tin Over Nickel Plated
 Applicable PC Board Thickness: 0.8 ~ 1.6mm
 Contact Resistance: Initial Value / 10mΩ max.
 After environmental testing 20mΩ max.

CKT.	A	B	C
2	2.00	7.90	4.80
3	4.00	9.90	6.80
4	6.00	11.90	8.80
5	8.00	13.90	10.80
6	10.00	15.90	12.80
7	12.00	17.90	14.80
8	14.00	19.90	16.80
9	16.00	21.90	18.80
10	18.00	23.90	20.80
11	20.00	25.90	22.80
12	22.00	27.90	24.80
13	24.00	29.90	26.80
14	26.00	31.90	28.80
15	28.00	33.90	30.80
16	30.00	35.90	32.80

PH-WR-xx-LF
 LEADFREE
 02~16WAY

RoHS Compliant



PART NO. PH-WR-xx

DWG NO. PH-WR-xx

CHECKED BY CY

FILE NO.

DRAWING BY

TOLERANCES ARE
 .X ± 0.2
 .XX ±
 .XXX ±
 AWG

DESCRIP TION:
 AREA

2.0mm Wire-to-Board Header
 SMD 90° SM3 Type
 REVISIONS
 HK
 DATE

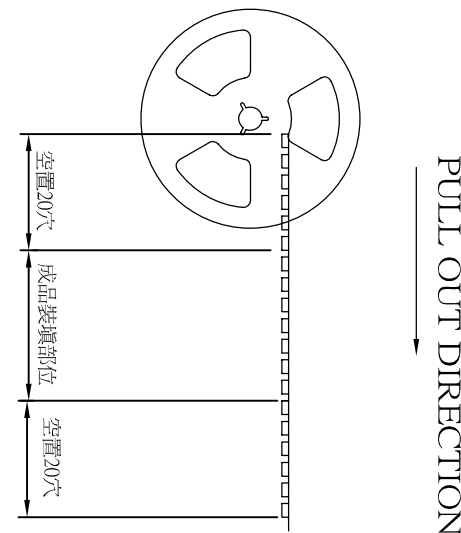
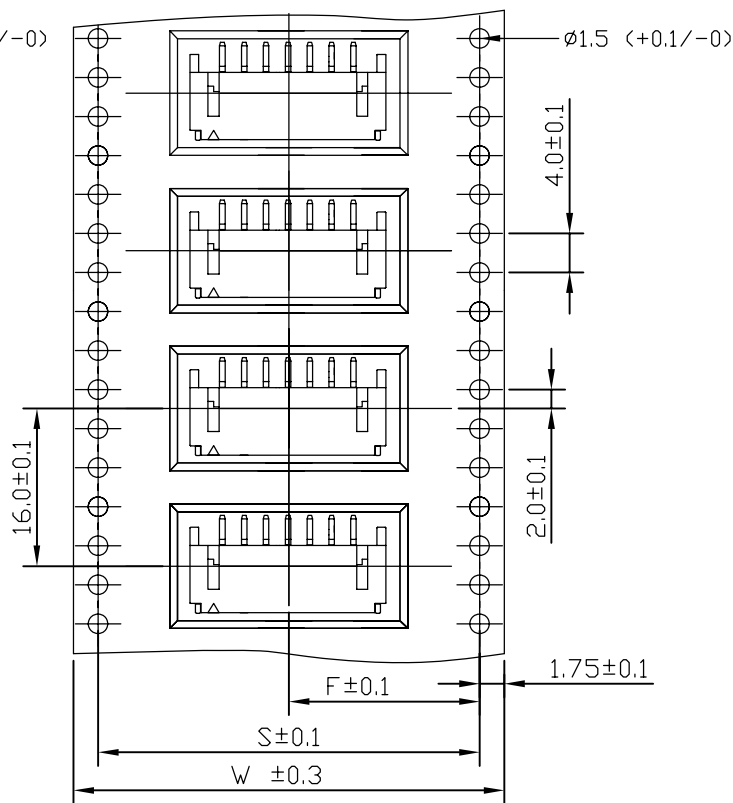
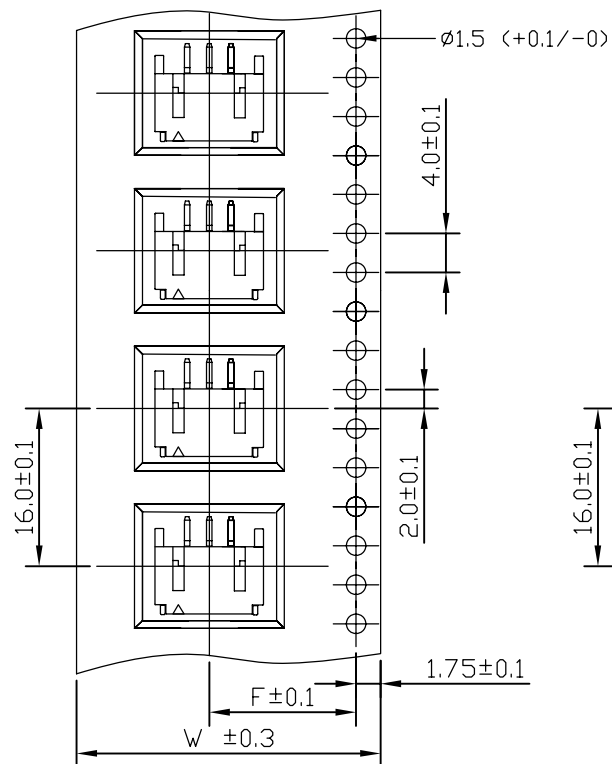
煜倫股份有限公司

UNIT / mm SCALE 1:1

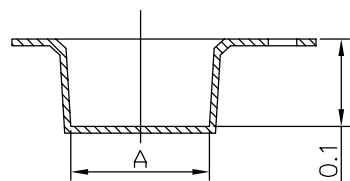
PROJECTION

2-4P Contacts

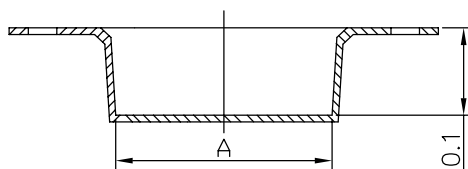
5-16P Contacts



P=Poles	W	F	S	Q'TY/Reel
02	24	11.5		1000PCS
03	24	11.5		1000PCS
04	24	11.5		1000PCS
05	32	14.2	28.4	1000PCS
06	32	14.2	28.4	1000PCS
07	32	14.2	28.4	1000PCS
08	44	20.2	40.4	1000PCS
09	44	20.2	40.4	1000PCS
10	44	20.2	40.4	1000PCS
11	44	20.2	40.4	1000PCS
12	44	20.2	40.4	1000PCS
13	44	20.2	40.4	1000PCS
14	56	26.2	52.4	1000PCS
15	56	26.2	52.4	1000PCS
16	56	26.2	52.4	1000PCS



$A = (P-1) \times 2 + 6.3\text{mm}$



$A = (P-1) \times 2 + 6.3\text{mm}$

MORETHANALL
CONNECTORS
ASSEMBLIES

煜倫股份有限公司

PART NO. PH-WR-xx

DWG NO. PH-WR-xx

FILE NO.

UNIT / mm

CHECKED BY CY

DRAWING BY

PROJECTION

SCALE 1:1

TOLERANCES ARE
.X ± 0.2
.XX ±
.XXX ±
AWG

DESCRIPTION:
AREA

2.0mm Wire-to-Board Header SMT
90° Type Tape&Reel
REVISIONS
HK
DATE