

P.C.B. LAYOUT

SPECIFICATIONS

CURRENT RATING: 3A AC,DC

VOLTAGE RATING: 250V AC,DC

TEMPERATURE RANGE: -25°C ~ +85°C  
(INCLUDING TEMPERATURE RISE)

INSULATION RESISTANCE: 1,000M MIN.

WITHSTAND VOLTAGE: 800V AC/MINUTE

APPLICABLE WIRES: AWG #28 ~ #22

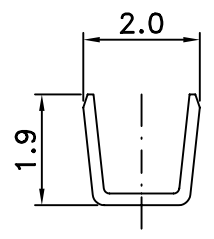
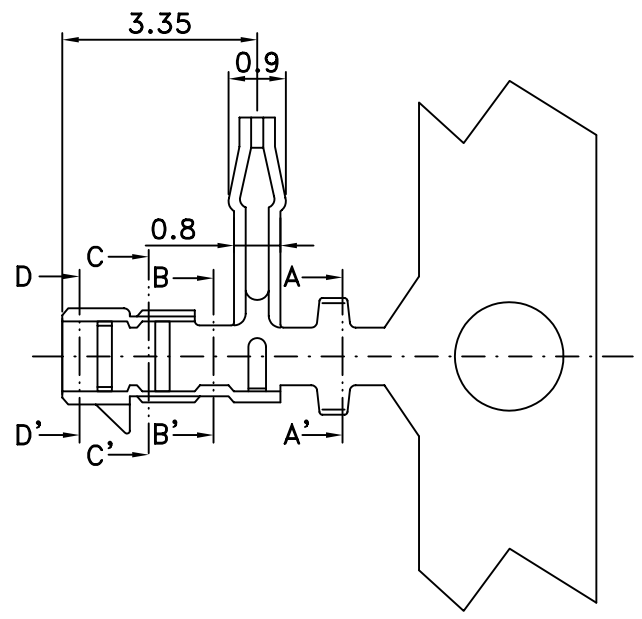
APPLICABLE PC BOARD THICKNESS

SHAPE A CONTACT: .047(1.2)

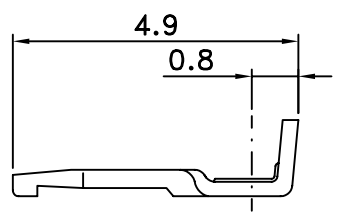
MATERIAL AND FINISH:

HOUSING: NYLON 66 UL94V-0

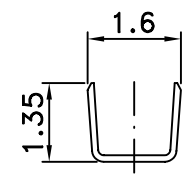
CONTACTS: PHOSPHOR BRONZE, TIN PLATING



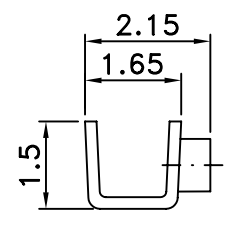
SECTION A-A'



SECTION B-B'



SECTION C-C'



SECTION D-D'

**MORETHANALL**  
CONNECTORS  
ASSEMBLIES

煜倫有限公司

PART NO. SAR-T-22

DWG NO. SAR-T-22

FILE NO.

UNIT / mm

APPROVED BY CY

DRAWING BY

PROJECTION

SCALE 1:1

TOLERANCES ARE  
X. ± 0.2  
XX.  
XXX.  
AWG

DESCRIP TION:  
AREA

2.0MM TERMINAL  
REVISIONS

HK DATE