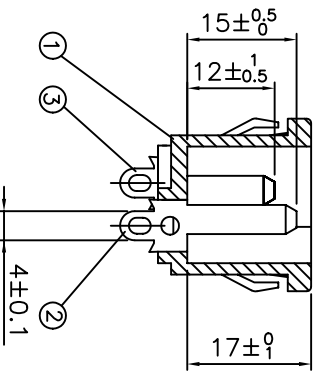


PANEL CUTOUT THICKNESS 0.8mm~1.5mm



- 1 Body Insulator Nylon A216-BK
- 2 Contact PIN Bronze Strip t=2mm Tin-Plated
- 3 Contact PIN Bronze Strip t=2mm Tin-Plated

10A/15A 250V AC
UL NO:E102641
CSA NO:LR 65612
VDE NO:62435
SEV NO:98,5 50908,01
FIMKO NO:173790-01
DEMKO NO:103171
KEMA NO:9 16468
NEMKO NO:L 85771
SEMKO NO:9125148

一般公差	
尺寸範圍	容許公差
0~10	±0.3
10~100	±0.5
100~150	±0.8
150~250	±1



煜倫有限公司

PART NO. ACF-PS4PA-03

DWG NO. ACF-PS4PA-03

FILE NO. SS-120-E-4.0

UNIT / mm

SCALE 1 : 1

CHECKED BY CY

DRAWING BY

PROJECTION



TOLERANCES ARE

X .XX
XX .XXX
AWG

DESCRIPTION:

AREA

REVISIONS

HK

DATE