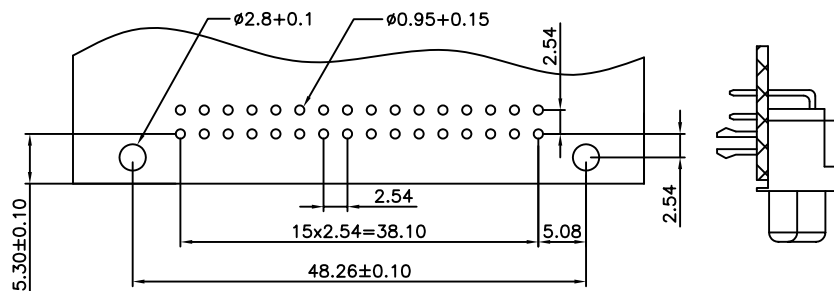


Recommended P.C.B. layout



DIN 41612 EUROCARD CONNECTORS

Right Angle Female Type Q Connectors

Technical data

EURO DIN 41612:

Housing:

Contact:

Plating:

Operating temperature:

Contact resistance:

Insulator resistance:

Current rating:

Withstanding voltage:

Contact Rating:

RoHS Compliant

Signal

PBT & 30%Class Fiber(UL94-0)

Female : Phosphor Bronze,lead free
2U" Au plated on contact area,
Tin plated on tail

-55°C~+105°C

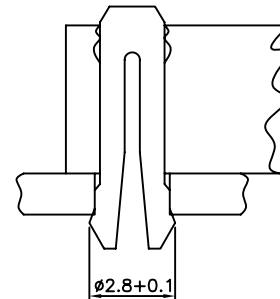
30m(ohm)max.at DC 500V

1000M(ohm)min.at DC 500V

2 AMP

AC 1000V for 1 minute

Class 3



RoHS Compliant

TOLERANCES ARE

MORETHANALL
PCB CONNECTORS
Cable ASSEMBLIES

DRAWING BY CY

CHECKED BY GENIUS

UNIT / mm

SCALE 1 : 1

DATE

SIZE A4

P PROJECTION

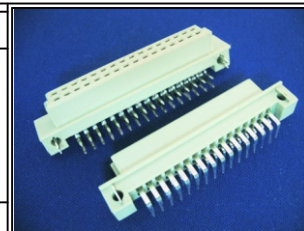
X. ±

.X ±

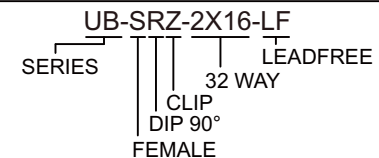
.XX ±

.XXX ±

ANG ±



ORDER INFORMATION



DESCRIPTION:

煜倫股份有限公司

www.morethanall.com