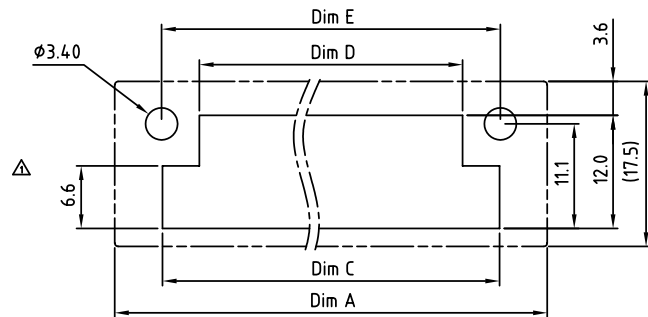


N=NUMBER OF CONTACTS

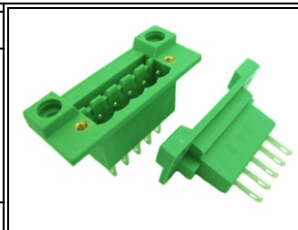
Cutout dimensions



- Material:
- ▲ ● Item a Male contact : Copper with Tin plated.
 - Item b Flange screw nut: brass M2.5.
 - Item c Terminal (housing): Thermoplastic(UL94V-0)
- Electrical cULus
- Voltage rating: 300VAC
 - Current rating: 7A.
 - Withstanding Voltage: 1.6kv
 - Safety Approval: us

DIMENSION ▲

Dim A	Nx5.08+20.5
Dim B	(N-1)x3.81
Dim C	Nx5.08+10.3
Dim D	Nx5.08+2.5
Dim E	Nx5.08+10.52
Poles	Tolerance
2pole_5pole	±0.10
6pole_10pole	±0.20
11pole_15pole	±0.30
16pole_24pole	±0.40



RoHS Compliant

TOLERANCES ARE

MORETHANALL
PCB CONNECTORS
Cable ASSEMBLIES

DRAWING BY CY
CHECKED BY GENIUS
UNIT / mm SCALE 1 : 1
DATE

X. ±
.X ±
.XX ±
.XXX ±
ANG ±

煜倫股份有限公司

www.morethanall.com

SIZE A4 PPROJECTION

ORDER INFORMATION

TBH051-PSFPE-xx-LF
SERIES | LEADFREE
02~24WAY
MALE | PANEL
FLANGE
SOLDER

DESCRIPTION: